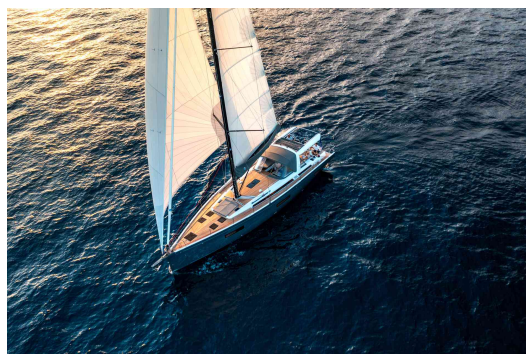




BENETEAU OCEANIS YACHT 60

FEATURES:

Naval architect:	Biscontini Yacht Design - DISEÑO : Lorenzo Argento
LOA (m.):	18.95 MT.
Beam (m.):	5.25 MT.
Displacement (kg.):	21700 KG
Fuel tank (L.):	500 LT.
Fresh water (l.):	860 LT.
Max Engine Power (cv):	150 CV
Propulsion:	
CE Certification:	A10 / B14 / C14



azulyachts

*International
Yacht Broker*

Jardines de San Telmo, 16
07012 Palma de Mallorca
T: (+34) 971 280 270
M: (+34) 607 550 337
palma@azulyachts.com

Lunes a Viernes, de 9.00 a 18.00 h.
(Agosto, de 9.00 a 15.0
Sábados cerrado.

azulyachts.com

The Company offers the details of this vessel in good faith but cannot guarantee or warrant the accuracy of this information nor warrant the condition of the vessel. A buyer should instruct his agents, or his surveyors, to investigate such details as the buyer desires validated. This vessel is offered subject to prior sale, price change, or withdrawal without notice.

OTHER:

EXTERIOR DESIGN

The new cockpit layout provides a sense of ease and security: access to the foredeck is at the same level via deep side decks.

The two helm stations have been optimized so that all maneuvers can be carried out without leaving the helm. On-board systems such as Ship Control and Seanapps provide control of all on-board systems and allow for easy maintenance.

The Bimini is available in 2 configurations. The rigid version has a central section which slides forward to adjust the amount of cover in the cockpit. The crew will therefore always find the best compromise between protection and ventilation.

The generous dinghy garage holds a 2.8 m jet-propelled tender. This tender is operated by an electric winch with a double wire system and guiding rollers to make it effortless to launch and raise.

INTERIOR DESIGN

The galley, positioned in the centre of the boat, extends across the entire width: on the port side, storage and refrigeration; on the starboard side, the sink, the oven and the dishwasher. There is substantial storage space and an innovative worktop layout.

The large saloon where six people can seat around the table facing the relaxation area with its soft sofa. The curved chart table allows the navigator to participate in all the discussions on board.

Available in a 3-cabin version with 3 heads, the Oceanis Yacht 60 comes with two different finishes: walnut as standard and light oak on option. Many moulded wood features blend harmoniously with large lacquered white surfaces and are matched with exclusive upholstery. Together they create a distinctly stylish atmosphere.

The luxurious and relaxing owner's cabin offers privacy and a stunning view of the sea. The bed is only revealed on the starboard side once you have passed the private head, which is equipped with ample storage space.



*International
Yacht Broker*

Jardines de San Telmo, 16
07012 Palma de Mallorca
T: (+34) 971 280 270
M: (+34) 607 550 337
palma@azulyachts.com

Lunes a Viernes, de 9.00 a 18.00 h.
(Agosto, de 9.00 a 15.0
Sábados cerrado.

azulyachts.com



Photothèque Bénéteau - Octaris Yacht 60 - Mention obligatoire / Mandatory credit Photo Nicolas Curi



Photothèque Bénéteau - Octaris Yacht 60 - Mention obligatoire / Mandatory credit Photo Nicolas Curi



Photothèque Bénéteau - Octaris Yacht 60 - Mention obligatoire / Mandatory credit Photo Nicolas Curi



Photothèque Bénéteau - Octaris Yacht 60 - Mention obligatoire / Mandatory credit Photo Nicolas Curi



Photothèque Bénéteau - Octaris Yacht 60 - Mention obligatoire / Mandatory credit Photo Nicolas Curi

azulyachts

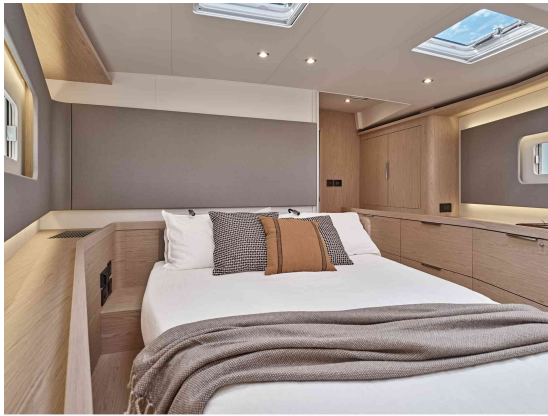
**International
Yacht Broker**

Jardines de San Telmo, 16
07012 Palma de Mallorca
T: (+34) 971 280 270
M: (+34) 607 550 337
palma@azulyachts.com

Lunes a Viernes, de 9.00 a 18.00 h.
(Agosto, de 9.00 a 15.0
Sábados cerrado.

azulyachts.com

The Company offers the details of this vessel in good faith but cannot guarantee or warrant the accuracy of this information nor warrant the condition of the vessel. A buyer should instruct his agents, or his surveyors, to investigate such details as the buyer desires validated. This vessel is offered subject to prior sale, price change, or withdrawal without notice.



Photothèque Bénéteau - Oceanis Yacht 60 - Mention obligatoire / Mandatory credit Photo Nicolas Cerni



Photothèque Bénéteau - First 44 - Mention obligatoire / Mandatory credit Photo Nicolas Cerni



Photothèque Bénéteau - Oceanis Yacht 60 - Mention obligatoire / Mandatory credit Photo Nicolas Cerni

azulyachts

*International
Yacht Broker*

Jardines de San Telmo, 16
07012 Palma de Mallorca
T: (+34) 971 280 270
M: (+34) 607 550 337
palma@azulyachts.com

Lunes a Viernes, de 9.00 a 18.00 h.
(Agosto, de 9.00 a 15.0
Sábados cerrado.

azulyachts.com

The Company offers the details of this vessel in good faith but cannot guarantee or warrant the accuracy of this information nor warrant the condition of the vessel. A buyer should instruct his agents, or his surveyors, to investigate such details as the buyer desires validated. This vessel is offered subject to prior sale, price change, or withdrawal without notice.