



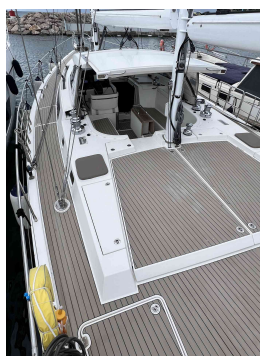
AMEL 64

REF: ODOO ID - 1.996

PRICE: 1.250.000,00 € VAT NOT INCLUSIVE

FEATURES:

Year:	2016
Homeport:	PENINSULA - ESPAÑA
LOA (m.):	19.22
Beam (m.):	5,60
Draught (m.):	2,71
Cabins (m.):	3
Material:	FIBERGLASS
Engine type:	VOLVO PENTA D4-180 1-F
Max Engine Power (cv):	134,23 KW
Fuel tank (l.):	DIESEL 1300 LT.
Fresh water (l.):	900 LT.
Hours:	1053 - 06.2024



azulyachts

*International
Yacht Broker*

Jardines de San Telmo, 16
07012 Palma de Mallorca
T: (+34) 971 280 270
M: (+34) 607 550 337
palma@azulyachts.com

Lunes a Viernes, de 9.00 a 18.00 h.
(Agosto, de 9.00 a 15.0
Sábados cerrado.

azulyachts.com

The Company offers the details of this vessel in good faith but cannot guarantee or warrant the accuracy of this information nor warrant the condition of the vessel. A buyer should instruct his agents, or his surveyors, to investigate such details as the buyer desires validated. This vessel is offered subject to prior sale, price change, or withdrawal without notice.

OTHER:

Amel 64 Sail Yacht - Luxury and Performance without Compromise, with 3 double cabins + 3 head compartments. Lighting. LED ceiling lights and 2 LED reading lights on headboard, 2 wall lights (1 halogen, 1 LED). Indirect lights and night markers.

The Amel 64 Sail Yacht is a perfect combination of elegance, comfort and sailing performance. Central double bed with slatted base and mattress. 2 head cabinets. Bed lift on gas struts. Lee-boards.

This luxury yacht is designed for long-range sailing cruising, offering an incomparable sailing experience. Storage under bed with 1 sliding case. Top access.

Arc 2018 winner in his category. Storage in closed and open cabinets, hanging locker.

NEW SAILS 2024

Mooring included for one year!

STANDARD EQUIPMENT

1/ 13

Engine: Volvo D4-180 1-F

Diesel fuel circuit: filter, bleed screw, injection pump, feedback to the tank

Oil circuit: filler, gauge, filter, drain hose, manual draining pump

2 x 24V fans: 1 extractor, 1 blower.

Diesel decanter pre-filter: 4-position distribution valve, filter cartridges, settler, engine and generator feed pipes, flame resistant bowl.

Cooling circuit:

Seawater: suction valve, filter, transparent cover, distribution manifold, clogging sensor and alarm, pump, heat exchangers, anti-siphon system, connection to the exhaust, exhaust pipe, exit on the hull with check valve. Anodes.

Fresh water: tank, temperature exchanger, pump, sensors, bypasses to water heater

Automatic fire extinguishing system, can be remotely triggered from the cockpit.

Electricity: 12 V alternator, 24 V alternator, relays, starter, control card, high pressure injectors.

Air. air filter, intercooler, turbo-compressor

220V electric sockets.

220V air conditioner, air intake and outputs, control panel, remote control, drainage of condensate.

8/13

Powder extinguisher.

Mizzen mast rigging chain plate anchor rod with lock nuts.

PORT AFT BATHROOM:

Skylight prism.

LEO ceiling lights.

Storage unit with inset wash basin, mixer tap, Corian top.

Cabinets, mirror, towel rail, hooks, paper holder, 2 glass holders, toilet brush.

Shower with removable teak floorboard, thermostatic controlled mixer tap, rain shower and side shower bar, storage and LED lighting. Shower swing door in safety glass.

Marine electric macerator toilet, black water tank, draining valve, electric gauge.

Access to the motors of the portside genoa and staysail sheet winches.

Hard dodger with 3 front grey tinted safety glass windscreens, opening central part. 2 electric multiple speed wipers, with fresh water rinse. Grey tinted Plexiglas side screens 2 opening hatches in the hard top.

Rigid sun cover sliding electrically to extend the hard top.

LED lighting under the hard top.

Helm under dodger with a stainless steel-wheel, leather-covered, hydraulic steering control.

Composite helmsman seat with seat and back covered with fabric (standard: Silvertex).

Engine control panel, inverter control, controls of bow and stern

azulyachts

International
Yacht Broker

Jardines de San Telmo, 16
07012 Palma de Mallorca
T: (+34) 971 280 270
M: (+34) 607 550 337
palma@azulyachts.com

Lunes a Viernes, de 9.00 a 18.00 h.
(Agosto, de 9.00 a 15.0
Sábados cerrado.

azulyachts.com

2/13

ZF63 2.5 hydraulic gearbox oil filler, gauge, drain orifice, cooler, filter, propeller shaft automatic brake circuit.

AMEL transmission lubricant reserve, coupling

Generator: ONAN MDKBV 19 kW

Diesel fuel circuit: primary coolant pump, priming switch, filter, injection pump, bleed screw.

Oil circuit: filler, gauge, filter, drain hose, pressure sensor.

Cooling circuit:

Seawater: feed hose, pump, temperature exchanger, anode, sensors, anti-siphon system, connection to the exhaust, water/ gas separator, exits on the hull.

Fresh water: reservoir temperature exchangers, sensor, pump.

Electricity:

12 V circuit: starter, diesel pump, alternator, circuit breaker.

220 V circuit: generator, output circuit breaker, automatic dock/ generator switch.

Automatic starting unit:

Waterproof battery box ventilation, locking, positive and negative battery cut-off with remote control.

Chargers (x2) 220 V/ 24 V 100 A: fan, circuit breaker.

24 V electricity: circuit-breaker panel, general terminal board.

6 x 12V/600Amp.p.h service gel batteries + 2 x 12V/200Amp.p.h gel batteries dedicated to the thruster, total capacity of 800Amp p h in 24 V

2 x 12V /90Amp p h batteries for the engine and generator starters

Drinking and washing water: pump, pressure reservoir, pressure gauge, connections, 1 water heater (2" water heater at the front part of the boat).

Effluent· sump, float switch for electric pump and circuit breaker, hand pump, alarm.

Anchor chain wash: fresh water pump on the front deck.

Air conditioning: 1 compressor, sea water circulation pump relay box, water heating circuit.

3/13

Cooling seawater outlet valve on the hull

Block valve flow for aft port shower drain.

thrusters, of the electric winches, reefing/furling of genoa, mainsail, second jib and mizzen sail, control of the mam boom vang, control of the capstan (and 2nd capstan in option).

Hydraulic autopilot control panel.

Console for electronic devices.

Magnetic compass with lighting.

HYDRA 5000 Monochrome GFD.

Speakers for radio-stereo-MP3 player

Folding cockpit table in Corian and teak with stainless steel handrail, icebox in the central part.

Lockers and storage spaces in the cockpit.

9/13

Ropes stored in the lockers: Boom tackle preventers, kicking strap and fore and aft preventers for the pole (optional), handling line for the mainsail halyard.

Manual bilge pump under helm seat.

1 manual bilge pump lever under helm seat.

2 Lewmar 68ST electric winches for the genoa sheets.

2 Lewmar 58ST electric winches for the second jib sheets.

1 Lewmar 48ST electric winch for the mizzen sail sheet.

1 Lewmar 50ST electric winch for the mainsail sheet and handling of the genoa and jib sheet travellers.

Powder extinguisher.

Remote activating of the FM200 fire extinguisher for the engine compartment.

FRONT LOCKER/SAIL LOCKER:

Access through deck hatch, locking system in the open position, inside and outside locking system.

Sail locker separated by a double watertight and isolated bulkhead. Drainage to the sump. Stainless steel ladder.

LED lighting and 220V electric socket. Handrails and hooks for mooring lines, ropes and miscellaneous.

Clear gelcoat interior finish.

Chain locker with watertight door and drainage to the sump.

Access to retractable MAX POWER 20 HP electric bow thruster, 2 dedicated batteries, emergency stop, jack, relay. Removable cover +



International
Yacht Broker

Jardines de San Telmo, 16
07012 Palma de Mallorca
T: (+34) 971 280 270
M: (+34) 607 550 337
palma@azulyachts.com

Lunes a Viernes, de 9.00 a 18.00 h.
(Agosto, de 9.00 a 15.0
Sábados cerrado.

azulyachts.com

Access through vertical concealing sliding door in tinted Plexiglas. Lock with key. Blocking system at several levels.

Horizontal tinted Plexiglas panel above the companionway, also sliding and concealing.

Companionway with 2 leather-covered handrails.

1 fire resistant cover.

1 powder extinguisher.

Carpentry and cabinet work in American walnut / floor boards in teak.

Access to diesel tanks (x2). for each tank: 2 inspection hatches under the deck, filler orifice, vent, electric gauge, distribution valve and remote control, feedback circuit + 1 daily tank.

Access to fresh water tank: 2 inspection hatches, backup electric pump, electric gauge.

Isolation valves for drain waters of front shower, bow thruster and chain locker.

4 hull portholes with blinds.

6 roof portholes with blinds.

4 deck panels, their locking and blocking in open position. Blinds and mosquito nets.

Opening porthole and blind above the galley, locking and blocking in open position.

Back-lighting.

DINING AREA: SPECIFIC VERSION:

Seat positioned in U, with storage under seats.

Air conditioning / heating 220V sockets behind port seat, control panel, remote control.

Storage under decks: reservoirs, drain pipes to the sump.

Sliding and swivelling table top for meals, locking. Vase support place.

TV screen on partition.

Ceiling lights and spotlights, circuit breaker, dimmer switch.

Fresh water tank inspection hatch + electric gauge.

220V sockets.

SALON / LOUNGE AREA: SPECIFIC VERSION:

fusible.

Electric boxes for the capstan and for the genoa and second jib furlers, capstan circuit breaker (2nd capstan in option).

Power circuit breakers for the capstan.

Battery set for bow thruster, capstan, genoa and second jib furlers.

AT THE BOW:

Stainless steel bow fitting for 2 anchors, with fresh water outlet on the deck

Stainless steel bow pulpit with 11ft11ng teak seat, locking system. LED running light.

10/13

2000w electric capstan Cockpit control and remote control. Release system.

2 stainless steel folding mooring cleats, 1 mooring and towing bollard

Reckmann electric genoa furler with manual back-up.

Reckmann electric jib furler with manual back up.

MAIN MAST:

Mainsail, genoa and second jib halyards.

AMEL 24V electric furler for the mainsail, with manual back-up.

2 LEWMAR manual halyard winches

1 mainsail halyard tensioner rail, 1 genoa halyard tensioner rail, 1 second Jib halyard tensioner rail

4 halyard jammers

LED anchoring light, LED tricolor light and LED

steaming light

CATWALKS:

On starboard Access hatch to the Diesel tank fillers. Locking system

On portside. Access hatch to the fresh water tank fillers. Locking system

On the port side, cockpit level 1 compartmented and ventilated locker for storage of miscellaneous equipment and fuel tank for the outboard engine Draining to the sump. Ventilation orifice toward outside. Locker lid on gas jacks with lock and locking system in the open position.

4 stainless steel U bolts on the bulwark.

2 sheet traveller rails on the roof, with 4 Antal travellers, controlled from the cockpit.

azulyachts

**International
Yacht Broker**

Jardines de San Telmo, 16
07012 Palma de Mallorca
T: (+34) 971 280 270
M: (+34) 607 550 337
palma@azulyachts.com

Lunes a Viernes, de 9.00 a 18.00 h.
(Agosto, de 9.00 a 15.0
Sábados cerrado.

azulyachts.com

Two sofas positioned in L, with storage under seats

4/13

Dresser with drawer's place beside the sofa.

Storage under decks.

Lighting by ceiling lights on dimmer switch and wall lights.

220V sockets.

Radio and CD player on port side.

Roof and hull portholes with blinds.

Deck panel, locking and blocking in open position.

Shelves and bookshelves on port side, at the corner of the sofas.

On portside: main mast rigging chain plate anchor rod with lock nuts.

Isolation valves for drain waters of fore shower, bow thruster and chain locker.

CHART TABLE:

24V electric board with circuit breakers, 24V service battery controller.

Sump alarm and sea water fire, 24 V electrical leakage tester, 24V alternator charge failure indicator.

24/12V/ transformers, 24V and 12V sockets, electronic equipment circuit breakers, connection terminal blocks, removable rack, chart table LED light.

GPS.

Radar.

VHF.

HYDRA 5000 navigation unit with GFD digital graphic display.

Seat and seatback covered with Silvertex fabric.

Chart table opening with gas strut, leather cover.

3 winch handles.

2 BLOC MARINE log books (Atlantic & Mediterranean).

Wardrobe.

In the wardrobe main mast rigging chain plate tie-rod with locking nuts.

GALLEY:

Galley units in white lacquered.

Bar in oak wood.

Stiff stainless steel side guardrails with double stainless steel intermediate lines. Port and starboard side openings.

2 open roller fairleads in the deck line.

4 stainless steel mooring cleats, foldable.

Single strand stainless steel standing rigging (rod for stay and inner forestay).

11/13

Set of Vectran and Dyneema halyards.

Antal pulley set.

MIZZEN MAST:

Mizzen sail halyard, electric mizzen sail furler, AMEL 24V

1 mizzen halyard tensioner.

2 mizzen halyard blockers.

1 Andersen return block sheet traveller

LED deck floodlight

Radar aerial.

Mizzen boom: hydraulic Jack, clew traveller, sheet tackle, automatic topping lift.

ON THE DECK, AFT:

On port side: large locker for equipment. Locker lid on gas jacks with lock. Contents: hydraulic unit for the autopilot (+ hydraulic unit for optional second autopilot), emergency tiller, 13 fenders (10 of 30x109cm and 3 of 55x71cm), 6 mooring lines (4 of 15m and 2 of 25m), a 220V tender inflater with its dedicated 220V socket, 220V shore power socket circuit breaker, 220V shore power cable. 4-function hydraulic unit, emergency manual back-up.

Centre and starboard side: large locker with watertight compartment for two gas bottles, equipped with a safety valve and a solenoid valve. The entire locker is ventilated. Locker lids (1 central and 1 on starboard) on gas jacks with

locking system.

Mizzen boom sheet rail and sheet traveller, with traveller adjustment system.

2 stainless steel mooring cleats, foldable.

Stainless steel pushpit with opening for access to the bathing platform and/or to the gangway. 1 teak seat in each corner.

Stainless steel bracket for liferaft container in the starboard pushpit.

azulyachts

International
Yacht Broker

Jardines de San Telmo, 16
07012 Palma de Mallorca
T: (+34) 971 280 270
M: (+34) 607 550 337
palma@azulyachts.com

Lunes a Viernes, de 9.00 a 18.00 h.
(Agosto, de 9.00 a 15.0
Sábados cerrado.

azulyachts.com

Extractor hood 220V filler.

Dishwasher with valve, 220V power supply, drainage.

Microwave oven/ grill.

Corian work top.

Sink with removable cover, both in Corian.

5/13

Fresh water in the sink, faucet with hand shower on hose, U-tube.

4 x 220 V sockets.

Solenoid valve control for the gas cylinders.

Freezer, thermostat, circuit breaker, thermometer.

Gas hob, 4 burners, safety gas cut-out, piezo-electric lighting, gimbaled with lock, accessories.

Inset electric oven / grill, safety devices, accessories, ventilation.

Rechargeable battery powered handy vacuum cleaner, garbage.

Access to mainsheet winch motor.

Refrigerator, thermostat, circuit thermometer, breaker, thermometer.

Storage under floorboards: reservoirs, drain pipes to the sump.

LEO ceiling lights.

Upper cabinets.

Back-lighting and night markers.

PASSAGE WAY:

220V electrical board with circuit breakers, multifunction digital display.

Generator control panel.

Phase tester and phase reversal.

Access to winch circuit breakers.

12V and 24V battery switches.

isolation valve for drain waters of starboard shower and galley.

FORWARD CABIN:

Access by watertight locking door + watertightness locking bar. Door holder for open position.

Hanging locker on starboard side with 2 doors, light inside the locker
Various storage, upper cabinets.

Horseshoe buoy with boat's name, stainless steel bracket in the pushpit on port side.

Stainless steel support for the flag pole, teak flag pole, boat national flag.

220V 64Amp shore power socket, water inlet, water outlet.

On the opening transom: name of the boat + port of registry, 3 stainless steel / teak steps.

12/13

The transom entirely opens by a remote controlled hydraulic system.
The transom completely lowers to become a bathing platform.

Stainless steel and teak stairway for access to the platform from the deck, unfolding automatically while the platform opens.

Stainless steel/teak removable bathing ladder to be fitted to the rear of the platform. The ladder can be used also both on port and starboard sides of the deck, through the openings of the guardrail.

Hot and cold-water shower with mixer.

The garage is watertight when transom and deck hatch are closed.

Access through transom which entirely lowers to become a launching platform for the tender.

Access also on the aft deck through a lid on gas jacks with locking system.

Light.

Clear gelcoat finish.

SAILS:

Tri-radial cut Hydranet genoa.

Tri-radial cut Hydranet second staysail.

Tri-radial cut Hydranet mainsail.

Tri-radial cut Hydranet mizzen sail.

ADDITIONAL EQUIPMENT

Specific saloon layout (see drawing version 1), oak wood, white galley except the bar.

2nd 24V deep freezer in the saloon.

Fresh water maker, 220V, 240 LT. / hour.

Extra cost for sails in D4.

Spinnaker pole with required rigging.

azulyachts

International
Yacht Broker

Jardines de San Telmo, 16
07012 Palma de Mallorca
T: (+34) 971 280 270
M: (+34) 607 550 337
palma@azulyachts.com

Lunes a Viernes, de 9.00 a 18.00 h.
(Agosto, de 9.00 a 15.0
Sábados cerrado.

azulyachts.com

Vanity / desk unit with swivel chair, mirror, 220V sockets, LEO lighting.

160 cm central double bed with slatted base and mattress. Bed lift on gas struts Lee-boards.

Storage under bed with 1 sliding case. Top access.

40 lt. hot water tank under the under-bed storage.

Lighting: LEO ceiling lights and 2 LED reading lights on headboard, 2 halogen wall lights on headboard Backlight.

Safe.

Storage under decks: through hull fitting and sounder sensor, speedometer.

6/13

2 opening deck hatches, locking and blocking in open position. Black-out blinds and mosquito screens.

2 hull portholes with blinds.

220V air conditioner, air intake and outputs, control panel, remote control, drainage of condensate.

Ladder for emergency exit through deck hatch.

Powder fire extinguisher.

Power circuit breakers for the genoa and second jib furlers in starboard cabinets.

FORWARD CABIN BATHROOM:

Access door opening toward the cabin, locking, locking in open position.

Shower with removable teak floorboard, thermostatic controlled mixer tap, rain shower and side shower, storage, LED lighting. Shower swing door in safety glass. Handrail in the shower.

Hot water supplied by dedicated water heater.

Opening deck hatch, locking system, blind and mosquito screen.

Lighting: LEO ceiling lights.

Storage unit with inset wash basin, mixer tap, Corian top.

Cabinets, mirror, towel rails, hooks, paper holder, 2 glass holders, toilet brush.

Marine electric macerator toilet, black water tank, draining valve, electric gauge.

STARBOARD AFT CABIN:

Access through the passageway by watertight locking door +

Spurs propeller line cutter.

Variable pitch / Feathering propeller.

Extra cost for 100m of stainless-steel chain (12mm).

Second electric anchor capstan.

Second stainless-steel anchor set (40m of chain, 60m of rope, 32kg Delta anchor).

LED lights package (white lights around the deck + in aft bathing platform +

under hard dodger with 3 dedicated switches, night lights inside the boat (warm color) with dedicated switches for each zone, blue underwater floodlights under boat stern (4 horizontal if possible), white floodlights (warm light) under mainmast and mizzen mast spreaders.

Retractable, tilting hydraulic gangway.

Aft deck angle fairleads.

AMEL 64 / PAGE 1/3

Set of beddings for all the vessel's berths (for each berth: one under sheet, one bottom sheet, one top sheet, one padded bedspread with cover, 1 pillow+ 1 pillowcase for single berths, or 2 pillows+ 2 pillowcases for double beds).

Set of cockpit cushions.

Set of sunbathing mattresses for the aft deck.

Sun cover (with stainless steel posts on the guardrail).

Cockpit winter enclosure.

Cockpit vertical awning, installed.

Set of tender covers (10).

Set of protection covers (cockpit table, companion way, helmsman seat, steering wheel, cockpit instruments).

Bose Lifestyle 535 home theatre.

FUSION radio-CD- DVD-MP3 player with Dock and 2 Bose 161 speakers in front cabin with Bluetooth.

VHF radio additional handset with loudhailer.

Electronic Pack: TZ 14 at chart table, repeater in cockpit, Overlay, Hub 101,

2nd GFD, 2 analogue displays (360°+ wind magnifier).

AIS FASO transceiver for Navnet with VHF antenna.

Second autopilot, Furuno Navpilot 711 C, installed and connected.



International
Yacht Broker

Jardines de San Telmo, 16
07012 Palma de Mallorca
T: (+34) 971 280 270
M: (+34) 607 550 337
palma@azulyachts.com

Lunes a Viernes, de 9.00 a 18.00 h.
(Agosto, de 9.00 a 15.0
Sábados cerrado.

azulyachts.com

watertightness locking bar. Door holder for open position.

Hull porthole, blind.

Opening deck hatch and portholes. Locking system, black-out blinds, mosquito screens.

Lighting: LED ceiling lights and 2 LED reading lights, 2 halogen wall lights, indirect and night lighting.

2 separate berths with extension for conversion into a double bed.

Storage in closed and open cabinets hanging locker, concealed push latches. Storage spaces under berths.

220V electric socket.

220V air conditioner, air intake and outputs, control panel, remote control, drainage of condensate.

7/13

Access to retractable MAX POWER 20 HP electric stern thruster, emergency stop, jack, fuse relay.

Mizzen mast rigging chain plate anchor rod with lock nuts.

Access to mizzen sheet winch motor.

Access to retractable MAX POWER 20 HP electric stern thruster, emergency stop, jack, relay.

STARBOARD AFT BATHROOM:

Skylight prism.

LED ceiling lights.

Storage unit with inset wash basin, mixer tap, Corian top.

Cabinets, mirror, towel rail, hooks, paper holder, glass holder, toilet brush.

Shower with removable teak floorboard, thermostatic controlled mixer tap, rain shower and side shower, storage and LED lighting. Shower swing door in safety glass.

Marine electric macerator toilet, black water tank, draining valve, electric gauge.

Laundry area with combined washing machine / dryer and storage space.

On the ceiling, access to the motors of the starboard genoa and staysail sheet winches.

PORT AFT CABIN:

Access through the passageway by watertight locking door + watertightness locking bar. Door holder for open position.

2 cameras on Front and Aft rigging and Quad view in the cockpit + 2 cameras (cockpit and engine room).

Saloon table: 2 rounded corners at starboard side, with 2 handles.

Equipment and modifications included in the specs of the AMEL 64:

Connection between Fusion and TZ 14.

Image of TZ14 on TV screen.

EMSA bottle holders for kitchen bar.

PAGE 2/3

Saloon upholstery in Suede Natura with piping in Suede Stone.

Bedheads in Zagros ivory white 2017.

Cockpit cushions, aft deck cushions, seat at chart table, helmsman seat: Silvertex Sandstone.

Leather for handrail+ front cabin vanity table: T. Moro 03.

Saloon dresser: less large with drawers in the long side.

Leather protection for the genoa and staysail furling gears.

2 places for glasses in the removable armrest of the sofa.

TV prewire front cabin.

Tender garage.

PAGE 3/3

	<p><i>International Yacht Broker</i></p>	<p>Jardines de San Telmo, 16 07012 Palma de Mallorca T: (+34) 971 280 270 M: (+34) 607 550 337 palma@azulyachts.com</p> <p>Lunes a Viernes, de 9.00 a 18.00 h. (Agosto, de 9.00 a 15.0 Sábados cerrado.</p> <p>azulyachts.com</p>
---	--	--

Hull porthole, blind.

Opening deck hatch and porthole. Locking system, blinds and mosquito screens.



International
Yacht Broker

Jardines de San Telmo, 16
07012 Palma de Mallorca
T: (+34) 971 280 270
M: (+34) 607 550 337
palma@azulyachts.com

Lunes a Viernes, de 9.00 a 18.00 h.
(Agosto, de 9.00 a 15.0
Sábados cerrado.
azulyachts.com



azulyachts

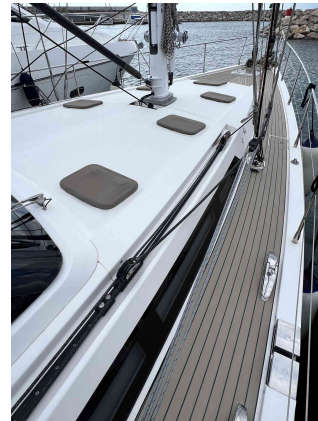
*International
Yacht Broker*

Jardines de San Telmo, 16
07012 Palma de Mallorca
T: (+34) 971 280 270
M: (+34) 607 550 337
palma@azulyachts.com

Lunes a Viernes, de 9.00 a 18.00 h.
(Agosto, de 9.00 a 15.0
Sábados cerrado.

azulyachts.com

The Company offers the details of this vessel in good faith but cannot guarantee or warrant the accuracy of this information nor warrant the condition of the vessel. A buyer should instruct his agents, or his surveyors, to investigate such details as the buyer desires validated. This vessel is offered subject to prior sale, price change, or withdrawal without notice.



azulyachts

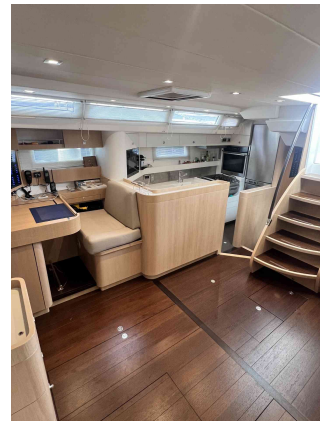
*International
Yacht Broker*

Jardines de San Telmo, 16
07012 Palma de Mallorca
T: (+34) 971 280 270
M: (+34) 607 550 337
palma@azulyachts.com

Lunes a Viernes, de 9.00 a 18.00 h.
(Agosto, de 9.00 a 15.0
Sábados cerrado.

azulyachts.com

The Company offers the details of this vessel in good faith but cannot guarantee or warrant the accuracy of this information nor warrant the condition of the vessel. A buyer should instruct his agents, or his surveyors, to investigate such details as the buyer desires validated. This vessel is offered subject to prior sale, price change, or withdrawal without notice.



azulyachts

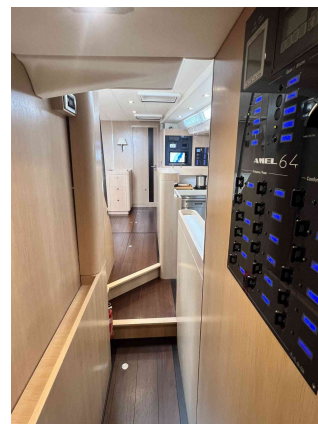
*International
Yacht Broker*

Jardines de San Telmo, 16
07012 Palma de Mallorca
T: (+34) 971 280 270
M: (+34) 607 550 337
palma@azulyachts.com

Lunes a Viernes, de 9.00 a 18.00 h.
(Agosto, de 9.00 a 15.0
Sábados cerrado.

azulyachts.com

The Company offers the details of this vessel in good faith but cannot guarantee or warrant the accuracy of this information nor warrant the condition of the vessel. A buyer should instruct his agents, or his surveyors, to investigate such details as the buyer desires validated. This vessel is offered subject to prior sale, price change, or withdrawal without notice.



azulyachts

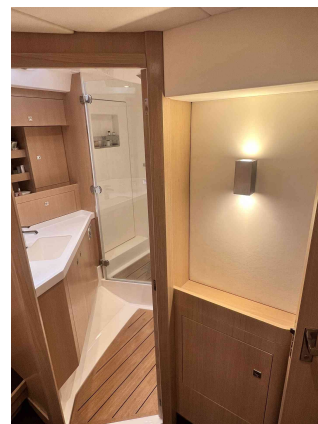
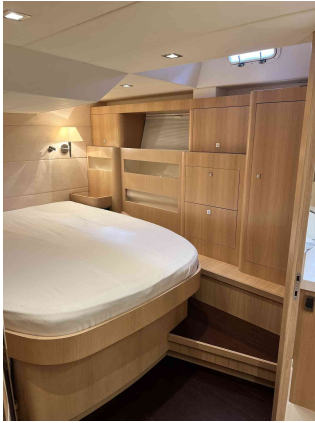
*International
Yacht Broker*

Jardines de San Telmo, 16
07012 Palma de Mallorca
T: (+34) 971 280 270
M: (+34) 607 550 337
palma@azulyachts.com

Lunes a Viernes, de 9.00 a 18.00 h.
(Agosto, de 9.00 a 15.0
Sábados cerrado.

azulyachts.com

The Company offers the details of this vessel in good faith but cannot guarantee or warrant the accuracy of this information nor warrant the condition of the vessel. A buyer should instruct his agents, or his surveyors, to investigate such details as the buyer desires validated. This vessel is offered subject to prior sale, price change, or withdrawal without notice.



azulyachts

*International
Yacht Broker*

Jardines de San Telmo, 16
07012 Palma de Mallorca
T: (+34) 971 280 270
M: (+34) 607 550 337
palma@azulyachts.com

Lunes a Viernes, de 9.00 a 18.00 h.
(Agosto, de 9.00 a 15.0
Sábados cerrado.

azulyachts.com

The Company offers the details of this vessel in good faith but cannot guarantee or warrant the accuracy of this information nor warrant the condition of the vessel. A buyer should instruct his agents, or his surveyors, to investigate such details as the buyer desires validated. This vessel is offered subject to prior sale, price change, or withdrawal without notice.



azulyachts

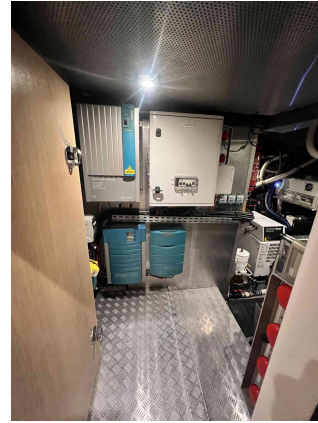
*International
Yacht Broker*

Jardines de San Telmo, 16
07012 Palma de Mallorca
T: (+34) 971 280 270
M: (+34) 607 550 337
palma@azulyachts.com

Lunes a Viernes, de 9.00 a 18.00 h.
(Agosto, de 9.00 a 15.0
Sábados cerrado.

azulyachts.com

The Company offers the details of this vessel in good faith but cannot guarantee or warrant the accuracy of this information nor warrant the condition of the vessel. A buyer should instruct his agents, or his surveyors, to investigate such details as the buyer desires validated. This vessel is offered subject to prior sale, price change, or withdrawal without notice.



azulyachts

*International
Yacht Broker*

Jardines de San Telmo, 16
07012 Palma de Mallorca
T: (+34) 971 280 270
M: (+34) 607 550 337
palma@azulyachts.com

Lunes a Viernes, de 9.00 a 18.00 h.
(Agosto, de 9.00 a 15.0
Sábados cerrado.

azulyachts.com

The Company offers the details of this vessel in good faith but cannot guarantee or warrant the accuracy of this information nor warrant the condition of the vessel. A buyer should instruct his agents, or his surveyors, to investigate such details as the buyer desires validated. This vessel is offered subject to prior sale, price change, or withdrawal without notice.