



DELPHIA 33.3

REF: ODOO ID - 2.009

PRICE: 75.000,00 € VAT PAID

FEATURES:

Year:	2011
Homeport:	MALLORCA
LOA (m.):	9.95
Beam (m.):	3,47
Draught (m.):	1,85
Cabins (m.):	2
Material:	FIBERGLASS
Engine type:	VOLVO PENTA D1
Max Engine Power (cv):	22 KW
Fuel tank (l.):	125 LT.
Fresh water (l.):	210 LT.
Hours:	330 - 06.2024



azulyachts

*International
Yacht Broker*

Jardines de San Telmo, 16
07012 Palma de Mallorca
T: (+34) 971 280 270
M: (+34) 607 550 337
palma@azulyachts.com

Lunes a Viernes, de 9.00 a 18.00 h.
(Agosto, de 9.00 a 15.0
Sábados cerrado.

azulyachts.com

The Company offers the details of this vessel in good faith but cannot guarantee or warrant the accuracy of this information nor warrant the condition of the vessel. A buyer should instruct his agents, or his surveyors, to investigate such details as the buyer desires validated. This vessel is offered subject to prior sale, price change, or withdrawal without notice.

OTHER:

Delphia 33.3 from year 2011 for sale in Mallorca. All taxes paid and the boat in perfect condition! Possibility to purchase mooring of 11 x 3,50! A great opportunity!

Hull:

- White colour
- Handmade laminate
- Dark blue waterline stripes on hull
- Sandwich construction
- Cast iron ballast
- Bearing rudder

Deck:

- White colour
- Handmade laminate, sandwich construction sandwich construction
- Bow fitting with single anchor roller
- Aft basket and bow basket with lights
- LED navigation light
- Anchor hatch with additional reinforcement for anchor windlass
- Aluminium fender strip with six half-locks
- Mooring cleats - bow and stern
- 8 railing posts with double railing
- 2 large and 4 small opening hatches
- Panoramic tinted Plexiglas windows
- 2 handrails
- 2 triple and 2 double turning blocks
- 2 jib rails with bogies
- Bearing-mounted mainsheet traveller
- 2 self-tailing winches No. 20 STA

Cockpit:

- Spacious, self-draining cockpit with two tankers
- Plexiglas slider and 2-part sterncastle
- 2 opening hatches in aft cabin
- 2 triple and 2 double rope stops
- 2 self-tailing winches No. 35.2 STA
- 2 winch cranks
- Floor and seats in teak
- Gas bottle holder, 3/8 gas system, gas leak tester
- Steering column with 900 mm wheel, larger head, railing, magnetic compass
- Engine control panel
- Emergency tiller
- Teak bathing platform with ladder

Rigging:

- Mast
- Boom with tensioner

- Furling jib
- Short batten mainsail with two reefs
- Anchor light, engine light and deck light

Interior:

- Interior construction in mahogany, natural wood, slight variation in shade, matt varnish, horizontal (cream) stripes on bulkheads
- Forward cabin with double berth
- Navigation table in the mess room
- Manual aft toilet with 47 L faecal tank
- Table in saloon
- Aft cabin with double berth + wardrobe
- Upholstery in blue

Galley:

- Double sink with covers for compartments
- 2 burner cooker with oven
- 40L air-cooled fridge
- Shelves for dishes
- Tap with hot and cold water
- Countertop (light colour)
- Fire extinguisher
- Waste basket

Electrical installation:

- Electrical board, battery status indicator, water tank level, faecal matter, fuel level
- Main circuit breakers
- Charger 230V/12V with 15 m cable with plug
- LED interior lighting
- 1 12 V socket
- 2 sockets 230V (bathroom, navigation table)
- Life battery 2 x 100 Ah, starter battery 1 x 80 Ah,

Water system

- Drinking water tank 210 L
- Hot water system
- Water pressure installation
- 1 electric bilge pump
- 1 manual bilge pump

Engine:

- Volvo Penta D1-20 S-drive engine, fixed twin propeller, port 16"/11"
- Soundproofing 30mm, 100kg/m3
- Fuel tank 125 L
- Automatic engine compartment fire extinguisher

Electronics:

		International Yacht Broker	Jardines de San Telmo, 16 07012 Palma de Mallorca T: (+34) 971 280 270 M: (+34) 607 550 337 palma@azulyachts.com	Lunes a Viernes, de 9.00 a 18.00 h. (Agosto, de 9.00 a 15.0 Sábados cerrado. azulyachts.com
---	--	-----------------------------------	--	---

- Garmin GMI 10, speed, temperature, depth sensor



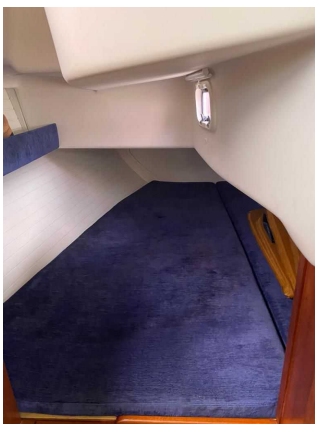
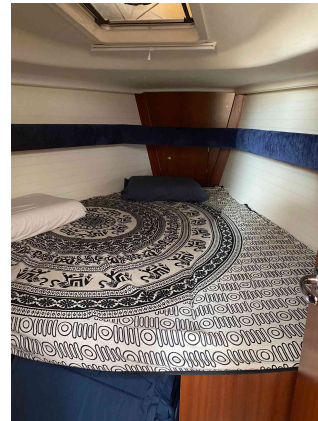
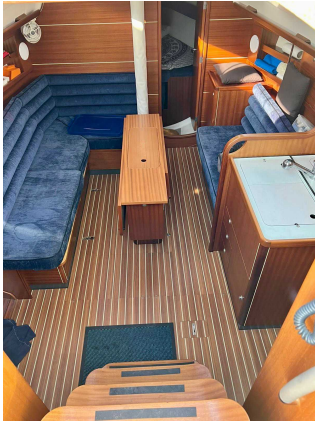
*International
Yacht Broker*

Jardines de San Telmo, 16
07012 Palma de Mallorca
T: (+34) 971 280 270
M: (+34) 607 550 337
palma@azulyachts.com

Lunes a Viernes, de 9.00 a 18.00 h.
(Agosto, de 9.00 a 15.0
Sábados cerrado.

azulyachts.com

The Company offers the details of this vessel in good faith but cannot guarantee or warrant the accuracy of this information nor warrant the condition of the vessel. A buyer should instruct his agents, or his surveyors, to investigate such details as the buyer desires validated. This vessel is offered subject to prior sale, price change, or withdrawal without notice.



azulyachts

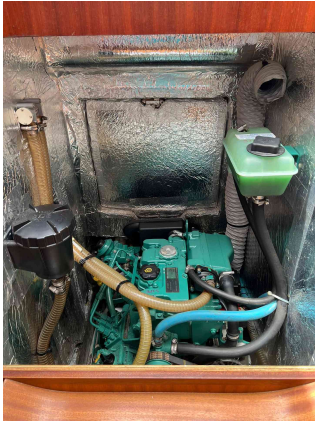
*International
Yacht Broker*

Jardines de San Telmo, 16
07012 Palma de Mallorca
T: (+34) 971 280 270
M: (+34) 607 550 337
palma@azulyachts.com

Lunes a Viernes, de 9.00 a 18.00 h.
(Agosto, de 9.00 a 15.0
Sábados cerrado.

azulyachts.com

The Company offers the details of this vessel in good faith but cannot guarantee or warrant the accuracy of this information nor warrant the condition of the vessel. A buyer should instruct his agents, or his surveyors, to investigate such details as the buyer desires validated. This vessel is offered subject to prior sale, price change, or withdrawal without notice.



azulyachts

*International
Yacht Broker*

Jardines de San Telmo, 16
07012 Palma de Mallorca
T: (+34) 971 280 270
M: (+34) 607 550 337
palma@azulyachts.com

Lunes a Viernes, de 9.00 a 18.00 h.
(Agosto, de 9.00 a 15.0
Sábados cerrado.

azulyachts.com

The Company offers the details of this vessel in good faith but cannot guarantee or warrant the accuracy of this information nor warrant the condition of the vessel. A buyer should instruct his agents, or his surveyors, to investigate such details as the buyer desires validated. This vessel is offered subject to prior sale, price change, or withdrawal without notice.