



SEA RAY 510 SUNDANCER

REF: ODOO ID - 2.028

PRICE: 550.000,00 € VAT PAID

FEATURES:

Year:	2015
Homeport:	PENINSULA - ESPAÑA
LOA (m.):	15,54
Beam (m.):	4,47
Draught (m.):	1,24
Cabins (m.):	2
Material:	FIBERGLASS
Engine type:	2 X Cummins QSC 8.3 600 HO
Max Engine Power (cv):	2 X 600 HP CON EJES
Fuel tank (l.):	1514 LT. DIESEL
Fresh water (l.):	416 LT.
Hours:	599 - 10.2024



azulyachts

*International
Yacht Broker*

Jardines de San Telmo, 16
07012 Palma de Mallorca
T: (+34) 971 280 270
M: (+34) 607 550 337
palma@azulyachts.com

Lunes a Viernes, de 9.00 a 18.00 h.
(Agosto, de 9.00 a 15.0
Sábados cerrado.

azulyachts.com

The Company offers the details of this vessel in good faith but cannot guarantee or warrant the accuracy of this information nor warrant the condition of the vessel. A buyer should instruct his agents, or his surveyors, to investigate such details as the buyer desires validated. This vessel is offered subject to prior sale, price change, or withdrawal without notice.

OTHER:

This yacht is registered under the Spanish flag, with all taxes already paid. It has a large sundeck at the bow and a hydraulic platform at the stern, equipped with support for dinghy or jet ski. The hardtop has an electric opening. The interior control area offers a swivel seat for both pilot and co-pilot, accompanied by an L-shaped settee on the port side. Outside, U-shaped seating surrounds a cockpit table also on the port side. Sea Ray's construction stands out for its robustness and excellent quality, comparable to the best European shipyards. The boat has two comfortable cabins with private bathrooms and a very bright interior saloon, thanks to a large zenithal window. The master cabin in the bow includes a double bed with electric bed base, adjustable by remote control, ideal for reading comfortably. He is the second owner of the boat, which has always been maintained by the same skipper, who has taken meticulous care of it. Two years ago, a 10mm teak deck was installed in the cockpit and bathing platform. Full maintenance and service history is available since purchase.

Equipped with twin Cummins diesel engines with shafts, these engines are extremely reliable and require low maintenance. In addition, the joystick-controlled bow and stern thrusters make docking and undocking manoeuvres considerably easier, making it very easy to handle despite its size.

EQUIPMENT

Electrical equipment

External power input

Generator

Inverter

Electronics

Probe

Radar

Slider - Speedometer

TV

Plotter - Chart plotter

Autopilot

GPS

Cockpit speakers

VHF radio

Interior equipment

Stern thruster

Electric bilge pump

Oven

Microwave

Air conditioning

Electric toilet

Heating

Hot water

Fridge

Freezer



International
Yacht Broker

Jardines de San Telmo, 16
07012 Palma de Mallorca
T: (+34) 971 280 270
M: (+34) 607 550 337
palma@azulyachts.com

Lunes a Viernes, de 9.00 a 18.00 h.
(Agosto, de 9.00 a 15.0
Sábados cerrado.

azulyachts.com

Battery charger

Outside equipment

Teak cockpit

Cockpit shower

Cockpit cushions

Cockpit table

Hydraulic bathing platform



*International
Yacht Broker*

Jardines de San Telmo, 16
07012 Palma de Mallorca
T: (+34) 971 280 270
M: (+34) 607 550 337
palma@azulyachts.com

Lunes a Viernes, de 9.00 a 18.00 h.
(Agosto, de 9.00 a 15.0
Sábados cerrado.

azulyachts.com



azulyachts

*International
Yacht Broker*

Jardines de San Telmo, 16
07012 Palma de Mallorca
T: (+34) 971 280 270
M: (+34) 607 550 337
palma@azulyachts.com

Lunes a Viernes, de 9.00 a 18.00 h.
(Agosto, de 9.00 a 15.0
Sábados cerrado.

azulyachts.com

The Company offers the details of this vessel in good faith but cannot guarantee or warrant the accuracy of this information nor warrant the condition of the vessel. A buyer should instruct his agents, or his surveyors, to investigate such details as the buyer desires validated. This vessel is offered subject to prior sale, price change, or withdrawal without notice.



azulyachts

*International
Yacht Broker*

Jardines de San Telmo, 16
07012 Palma de Mallorca
T: (+34) 971 280 270
M: (+34) 607 550 337
palma@azulyachts.com

Lunes a Viernes, de 9.00 a 18.00 h.
(Agosto, de 9.00 a 15.0
Sábados cerrado.

azulyachts.com

The Company offers the details of this vessel in good faith but cannot guarantee or warrant the accuracy of this information nor warrant the condition of the vessel. A buyer should instruct his agents, or his surveyors, to investigate such details as the buyer desires validated. This vessel is offered subject to prior sale, price change, or withdrawal without notice.



azulyachts

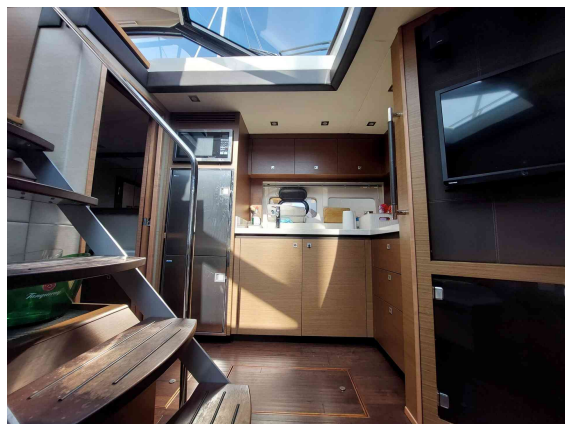
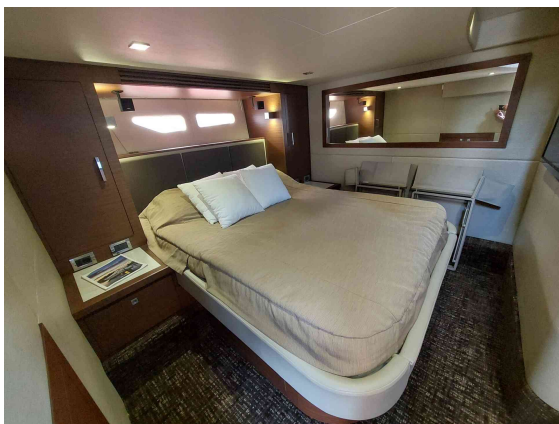
*International
Yacht Broker*

Jardines de San Telmo, 16
07012 Palma de Mallorca
T: (+34) 971 280 270
M: (+34) 607 550 337
palma@azulyachts.com

Lunes a Viernes, de 9.00 a 18.00 h.
(Agosto, de 9.00 a 15.0
Sábados cerrado.

azulyachts.com

The Company offers the details of this vessel in good faith but cannot guarantee or warrant the accuracy of this information nor warrant the condition of the vessel. A buyer should instruct his agents, or his surveyors, to investigate such details as the buyer desires validated. This vessel is offered subject to prior sale, price change, or withdrawal without notice.



azulyachts

*International
Yacht Broker*

Jardines de San Telmo, 16
07012 Palma de Mallorca
T: (+34) 971 280 270
M: (+34) 607 550 337
palma@azulyachts.com

Lunes a Viernes, de 9.00 a 18.00 h.
(Agosto, de 9.00 a 15.0
Sábados cerrado.

azulyachts.com

The Company offers the details of this vessel in good faith but cannot guarantee or warrant the accuracy of this information nor warrant the condition of the vessel. A buyer should instruct his agents, or his surveyors, to investigate such details as the buyer desires validated. This vessel is offered subject to prior sale, price change, or withdrawal without notice.



azulyachts

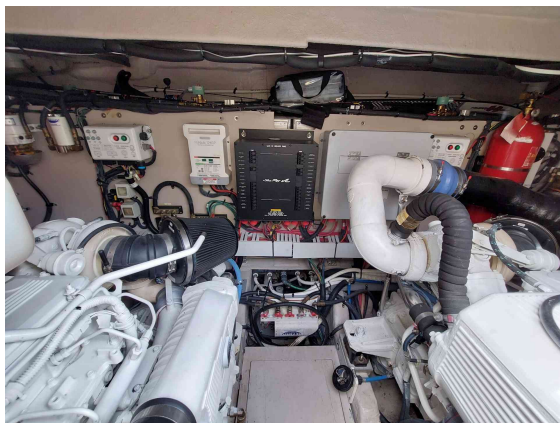
*International
Yacht Broker*

Jardines de San Telmo, 16
07012 Palma de Mallorca
T: (+34) 971 280 270
M: (+34) 607 550 337
palma@azulyachts.com

Lunes a Viernes, de 9.00 a 18.00 h.
(Agosto, de 9.00 a 15.0
Sábados cerrado.

azulyachts.com

The Company offers the details of this vessel in good faith but cannot guarantee or warrant the accuracy of this information nor warrant the condition of the vessel. A buyer should instruct his agents, or his surveyors, to investigate such details as the buyer desires validated. This vessel is offered subject to prior sale, price change, or withdrawal without notice.



azulyachts

*International
Yacht Broker*

Jardines de San Telmo, 16
07012 Palma de Mallorca
T: (+34) 971 280 270
M: (+34) 607 550 337
palma@azulyachts.com

Lunes a Viernes, de 9.00 a 18.00 h.
(Agosto, de 9.00 a 15.0
Sábados cerrado.

azulyachts.com

The Company offers the details of this vessel in good faith but cannot guarantee or warrant the accuracy of this information nor warrant the condition of the vessel. A buyer should instruct his agents, or his surveyors, to investigate such details as the buyer desires validated. This vessel is offered subject to prior sale, price change, or withdrawal without notice.