



BENETEAU OCEANIS YACHT 60

PRICE: 1.050.000,00 € VAT NOT INCLUSIVE

FEATURES:

Year:	2023
Homeport:	MALLORCA
LOA (m.):	17.6
Beam (m.):	5.30
Draught (m.):	2.18
Cabins (m.):	3
Material:	FIBREGLASS
Engine type:	YANMAR 4LV 110KW (150CV) D
Max Engine Power (cv):	150 CV
Fuel tank (l.):	DIESEL 1 X 500 L.
Fresh water (l.):	1 X 860 L.
Hours:	60 - 01-2025

REF: ODOO ID - 2.051



azulyachts

International
Yacht Broker

Jardines de San Telmo, 16
07012 Palma de Mallorca
T: (+34) 971 280 270
M: (+34) 607 550 337
palma@azulyachts.com

Lunes a Viernes, de 9.00 a 18.00 h.
(Agosto, de 9.00 a 15.0
Sábados cerrado.

azulyachts.com

The Company offers the details of this vessel in good faith but cannot guarantee or warrant the accuracy of this information nor warrant the condition of the vessel. A buyer should instruct his agents, or his surveyors, to investigate such details as the buyer desires validated. This vessel is offered subject to prior sale, price change, or withdrawal without notice.

OTHER:

The Beneteau Oceanis Yacht 60 from 2023 is an elegant and powerful sailing yacht designed for comfortable blue water sailing. With a length of 18.95 metres and a width of 5,30 metres, she offers generous space both on deck and in the interior.

Design and layout: The yacht is available in a 3-cabin version, each with its own bathroom. Two different finishes are available for the interior: standard in walnut or optional in light-coloured oak. The design emphasises fluidity of movement and safety on board, with wide side decks and a spacious cockpit.

Equipment: The Oceanis Yacht 60 has a spacious galley that extends across the entire width of the boat, a large saloon with space for six people and a luxurious owner's cabin with its own bathroom and sea view. The cockpit is designed so that all sailing manoeuvres can be carried out from the helm, which makes handling easier.

SHALLOW CAST IRON KEEL

SAILS LOCKER

3 CABINS 3 HEADS VERSION - 3 GLOSS OAK ALPI

FURLING MAST VERSION - ANODISED ALUMINIUM

LEATHER UPHOLSTERY IN SALOON - DK45 TAUPE

LUXE TRIM LEVEL - 3 CABINS VERSION

Offshore Raymarine Pack

1 Harken H50.2 STAEH starboard electric manoeuvring winch (in lieu of standard)

1 Accommodation ladder

Remote control opening of the aft platform

Spring mattress in the owner's cabin (thickness: 180mm / 7")

Deck wash electric pump, in the anchor well (Use of sea water or fresh water tanks)

2 000 W inverter

Hifi : Fusion Apollo RA670 with PW speakers + bass box in the saloon + 2 Fusion speakers in the cockpit

Electric saloon table pedestal for table lowering function or

additional berth with mattress for double berth use

11 KVA 230 V / 50 Hz Generator

Air conditioning 56 000 BTU + Shore socket extension cord (15m / 49'3" - 32Ah)

TECMA electric WC, fresh water or seawater, in the 2 aft heads

UPWIND AND DOWNWIND PACK

German System

2 Electric genoa winches (H70.2STAEH - 24V) + 1 Winch handle Dacron genoa on furler (to replace the standard self-tacking jib) Genoa sheet track on the coachroof + Genoa sheets
(the self-tacking jib track and the traveller are retained) Asymmetrical spinnaker rigging / Code 0

MOORING-ANCHORING PACK

Delta 40 kg/88 lbs anchor (galvanized steel)

Chain (Diameter: 12mm / 1/2" - Length: 70m / 230')

Ropes (Diameter: 22mm / 7/8" - Length: 50m / 164')

6 Fenders:

- 4 XL (Diameter: 300mm / 12" - Length: 880mm / 2'11")

- 2 L (Diameter: 250mm / 10" - Length: 700mm / 2'4")

4 Moorings lines (Diameter: 18mm / 11/16" - Length: 15m / 49'3")

ELECTRIC GENOA FURLER ON DECK (FURLING MAST)

H60.2 STAEH REWIND MANOEUVRING WINCHES - PORT & STARBOARD

FURLING HYDRANET GENOA FOR FURLING MAST

HYDRANET MAINSAIL FOR FURLING MAST

RETRACTABLE CAPSTAN (BOW)

STAINLESS STEEL ANCHOR FOR MOORING-ANCHORING PACK

COACHROOF SPRAYHOOD - CHARCOAL GREY

BATYLINE SHADE SIDES FOR BIMINI

CHARCOAL GREY BIMINI AFT CLOSING -FOR RIGID BIMNI

azulyachts

International
Yacht Broker

Jardines de San Telmo, 16
07012 Palma de Mallorca
T: (+34) 971 280 270
M: (+34) 607 550 337
palma@azulyachts.com

Lunes a Viernes, de 9.00 a 18.00 h.
(Agosto, de 9.00 a 15.0
Sábados cerrado.

azulyachts.com

2 Electrical bases for the cockpit tables for use as sundeck

Charcoal Grey covers for cockpit tables

Diamante Snow exterior cockpit upholstery:

- Seats and backs on the cockpit benches: Filter foam 80 mm/3" thickness (Density: 60F+20S)

- helmsman seatbacks and seats

- 2 Companionway sundecks with adjustable seat backs (ratchet system) and built-in cup holders

- 2 Cushions for the cockpit tables for use as sun deck

- 1 Sun deck mattress with built-in cup holders for forward deck
Retractable stern thruster

SEMI RIGID BIMINI WITH FOLDABLE CHARCOAL GREY CANVAS

INTEGRATED HYDRAULIC GANGWAY

ELECTRIC TENDER LOADING SYSTEM

SEA WATER ELECTRIC PUMP IN GALLEY

PRE INSTALLATION WATER MAKER (100 LITERS HOUR 24V-230V)

UNDERWATER PROJECTORS (X3)

LED SPREADER LIGHTING (ANODISED FURLING MAST)

UPGRADE: BUILT-IN ICE MAKER IN STANDARD DEEP FREEZE DRAWER

WASHER-DRYER (8KG/5KG) 230V

DISHWASHER (9 SETS) 230V-50H

SAFE

WHITE HULL STD

TV PRE-WIRING IN THE SALOON + LIFTING SYSTEM

TV PRE-WIRING IN OWNER'S CABIN

RAYMARINE CLEARCRUISE - AUGMENTED REALITY

RAYMARINE QUANTUM DOPPLER 2 RADAR

MULTIFONCTION SCREEN RAYMARINE AXIOM2 PRO 12"- CHART TABLE

IRO-DECKSLATTEDCATWALKS

IRO-DECKSLATTEDROOF



*International
Yacht Broker*

Jardines de San Telmo, 16
07012 Palma de Mallorca
T: (+34) 971 280 270
M: (+34) 607 550 337
palma@azulyachts.com

Lunes a Viernes, de 9.00 a 18.00 h.
(Agosto, de 9.00 a 15.0
Sábados cerrado.

azulyachts.com



azulyachts

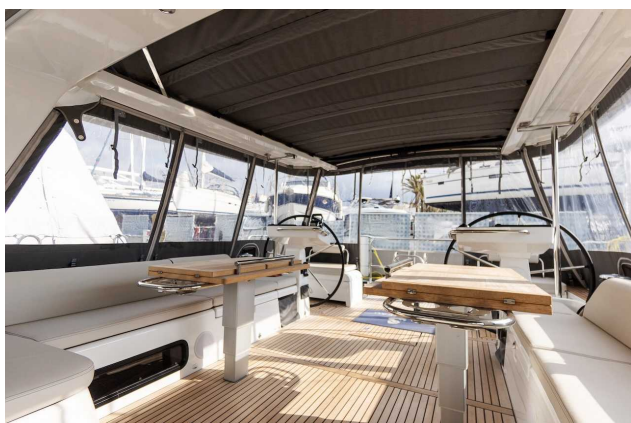
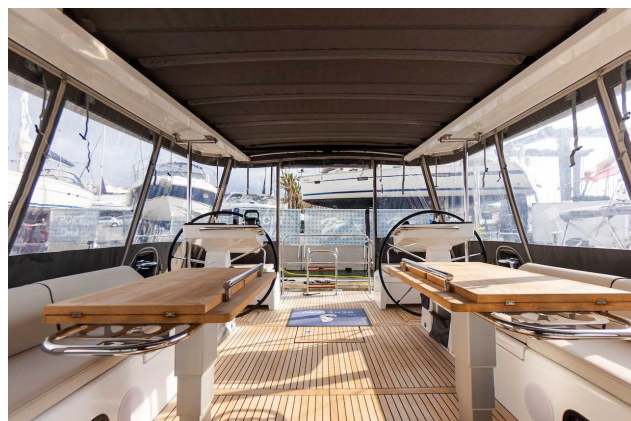
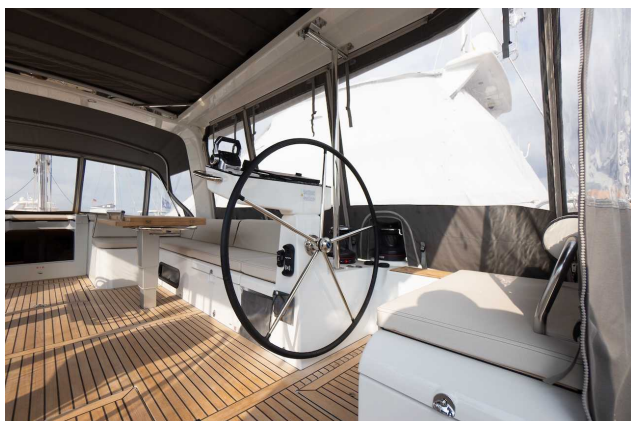
*International
Yacht Broker*

Jardines de San Telmo, 16
07012 Palma de Mallorca
T: (+34) 971 280 270
M: (+34) 607 550 337
palma@azulyachts.com

Lunes a Viernes, de 9.00 a 18.00 h.
(Agosto, de 9.00 a 15.0
Sábados cerrado.

azulyachts.com

The Company offers the details of this vessel in good faith but cannot guarantee or warrant the accuracy of this information nor warrant the condition of the vessel. A buyer should instruct his agents, or his surveyors, to investigate such details as the buyer desires validated. This vessel is offered subject to prior sale, price change, or withdrawal without notice.



azulyachts

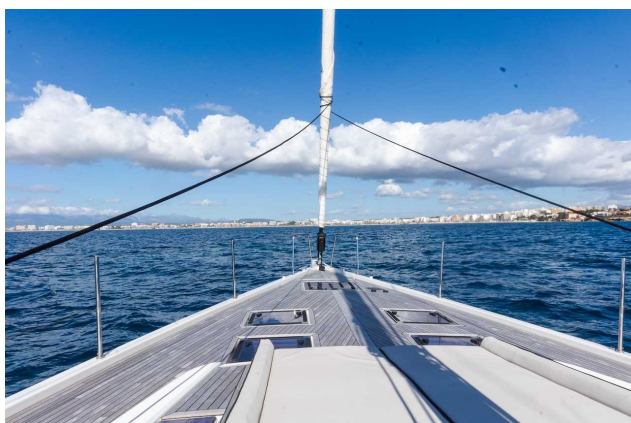
*International
Yacht Broker*

Jardines de San Telmo, 16
07012 Palma de Mallorca
T: (+34) 971 280 270
M: (+34) 607 550 337
palma@azulyachts.com

Lunes a Viernes, de 9.00 a 18.00 h.
(Agosto, de 9.00 a 15.0
Sábados cerrado.

azulyachts.com

The Company offers the details of this vessel in good faith but cannot guarantee or warrant the accuracy of this information nor warrant the condition of the vessel. A buyer should instruct his agents, or his surveyors, to investigate such details as the buyer desires validated. This vessel is offered subject to prior sale, price change, or withdrawal without notice.



azulyachts

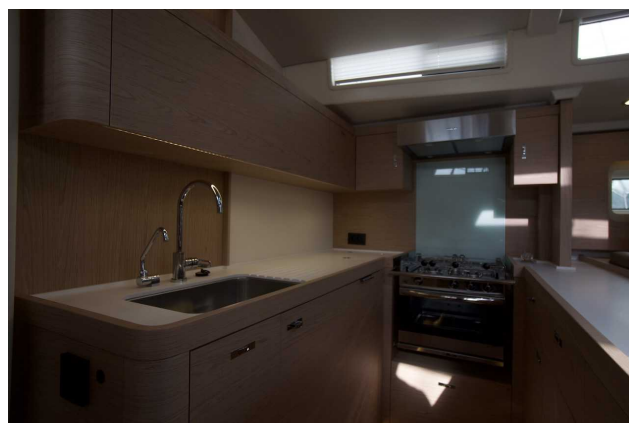
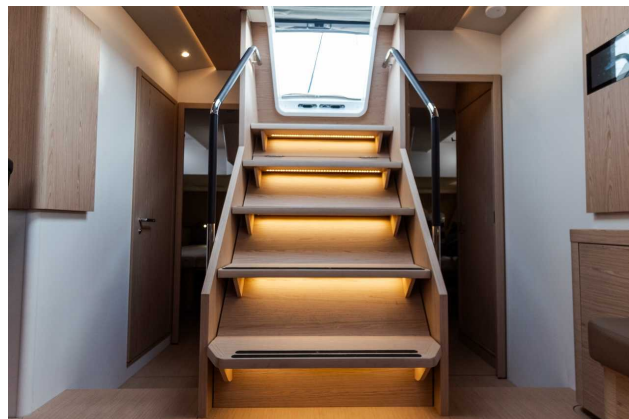
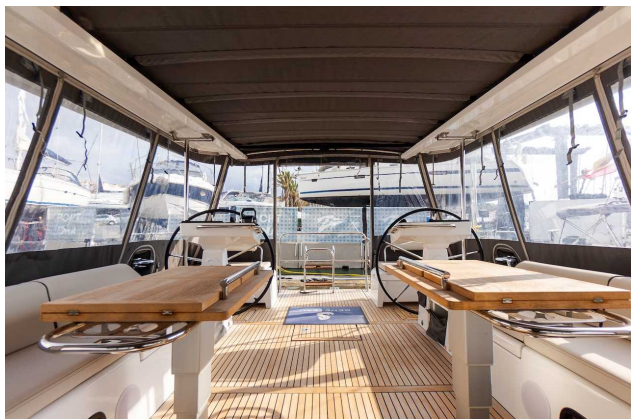
*International
Yacht Broker*

Jardines de San Telmo, 16
07012 Palma de Mallorca
T: (+34) 971 280 270
M: (+34) 607 550 337
palma@azulyachts.com

Lunes a Viernes, de 9.00 a 18.00 h.
(Agosto, de 9.00 a 15.0
Sábados cerrado.

azulyachts.com

The Company offers the details of this vessel in good faith but cannot guarantee or warrant the accuracy of this information nor warrant the condition of the vessel. A buyer should instruct his agents, or his surveyors, to investigate such details as the buyer desires validated. This vessel is offered subject to prior sale, price change, or withdrawal without notice.



azulyachts

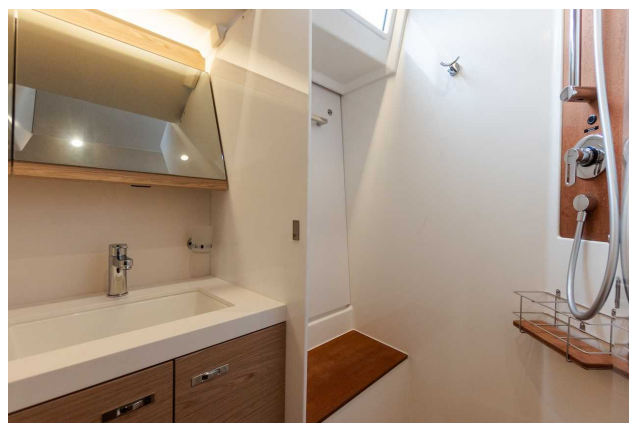
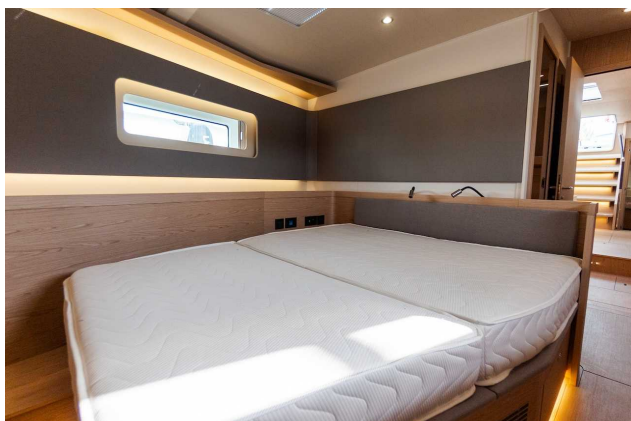
*International
Yacht Broker*

Jardines de San Telmo, 16
07012 Palma de Mallorca
T: (+34) 971 280 270
M: (+34) 607 550 337
palma@azulyachts.com

Lunes a Viernes, de 9.00 a 18.00 h.
(Agosto, de 9.00 a 15.0
Sábados cerrado.

azulyachts.com

The Company offers the details of this vessel in good faith but cannot guarantee or warrant the accuracy of this information nor warrant the condition of the vessel. A buyer should instruct his agents, or his surveyors, to investigate such details as the buyer desires validated. This vessel is offered subject to prior sale, price change, or withdrawal without notice.



azulyachts

*International
Yacht Broker*

Jardines de San Telmo, 16
07012 Palma de Mallorca
T: (+34) 971 280 270
M: (+34) 607 550 337
palma@azulyachts.com

Lunes a Viernes, de 9.00 a 18.00 h.
(Agosto, de 9.00 a 15.0
Sábados cerrado.

azulyachts.com

The Company offers the details of this vessel in good faith but cannot guarantee or warrant the accuracy of this information nor warrant the condition of the vessel. A buyer should instruct his agents, or his surveyors, to investigate such details as the buyer desires validated. This vessel is offered subject to prior sale, price change, or withdrawal without notice.