

# NEW BOAT



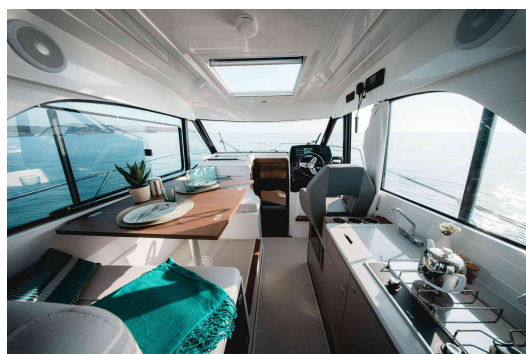
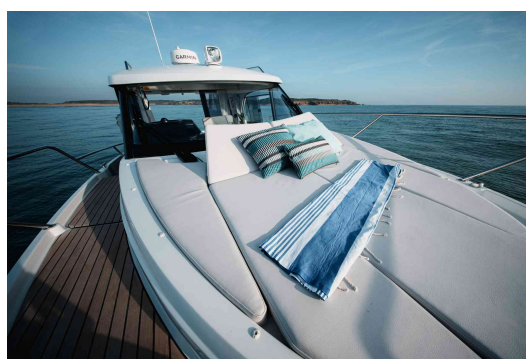
## BENETEAU ANTARES 9 V2

REF: ODOO ID - 2.060

**PRICE: 196.029,95 € VAT NOT INCLUSIVE**

### FEATURES:

Year:	2025
Homeport:	MALLORCA
LOA (m.):	8.23
Beam (m.):	2,99
Draught (m.):	0,63-0,96
Cabins (m.):	2
Material:	FIBERGLASS
Engine type:	SUZUKI 2 X 250 CV APX WHITE
Max Engine Power (cv):	2 X 250 CV
Fuel tank (l.):	2 X 300 LT
Fresh water (l.):	160 LT
Hours:	0 - 2025



**azulyachts**

International  
Yacht Broker

Jardines de San Telmo, 16  
07012 Palma de Mallorca  
T: (+34) 971 280 270  
M: (+34) 607 550 337  
palma@azulyachts.com

Lunes a Viernes, de 9.00 a 18.00 h.  
(Agosto, de 9.00 a 15.0  
Sábados cerrado.

**azulyachts.com**

The Company offers the details of this vessel in good faith but cannot guarantee or warrant the accuracy of this information nor warrant the condition of the vessel. A buyer should instruct his agents, or his surveyors, to investigate such details as the buyer desires validated. This vessel is offered subject to prior sale, price change, or withdrawal without notice.

## OTHER:

The Beneteau Antares 9 V2 2025 is a modern and stylish boat, designed to offer comfort and ease of navigation. This new version incorporates innovations and improvements from larger models, making it easier to move and manoeuvre, and increasing comfort both at anchor and when sailing.

### SUZUKI 2X250CV APX WHITE

Batteries (for house, engines, generator, bow thruster) sold by dealer separately

### COMFORTTRIMLEVEL

Electric windlass

Cockpit cushions for L-shaped salon

25L water heater

Complete electric system - 40AMP Battery charger

Indirect interior LED lighting

80L fridge

Interior curtains (wheelhouse and cabins)

Lenco electric trim tabs with control on the pilot station

Cushioned panel wheelhouse / salon

### PACKELECTRONICUPGRADED

Garmin 12" GPSMAP 1223 xsv Multifunction screen (chart not included)

Garmin GT15-TH Sensor

Wireless charger

### PACK SOUND

Fusion MS-RA210

Speakers x 4

### MOORING-ANCHORING KIT

### ADDITIONAL SEAT FOR U SHAPE SALON (BACK TO THE BAY WINDOW

### SWIM LADDER FOR SIDE GATE

### ROOF RACKS FOR PADDLE BOARD STORAGE (BLACK)

### REMOVABLE COCKPIT TABLE, IN POLYESTER

### COCKPIT SUNBATHING (CUSHIONS + SUPPORTS)

### FORWARD SUNBATHING MATTRESS

### BOW THRUSTER

### SOLAR PANNELS ON LONG ROOF - 130W(X2)

### DECK SEARCHLIGHT

### UNDERWATER LIGHTS

### AFT LIGHTING (X2), IN THE LONG ROOF

### MICROWAVE OVEN 230V

### ADDITIONAL BERTH FOR SALON

### LOWERDECK CARPET SAVAGE ABUNDANCE 39

### INFINITY INTERIOR CARPET IN WHEELHOUSE

### TV PRE-ASSEMBLY (230V) IN THE FORWARD CABIN

### TV PRE-ASSEMBLY IN SALON/GALLEY

### ELECTRIC DEFROST

### TEAK ON THE FORWARD DECK

### TEAK IN COCKPIT STARBOARD SIDEWALK AND AFT PLATFORMS

### CASCO BLANCO

### Vessel performance and engine installation

### TRANSPORT AND COMMISSIONING

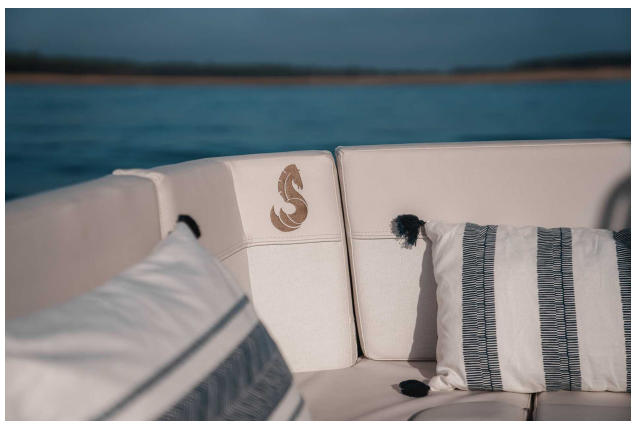
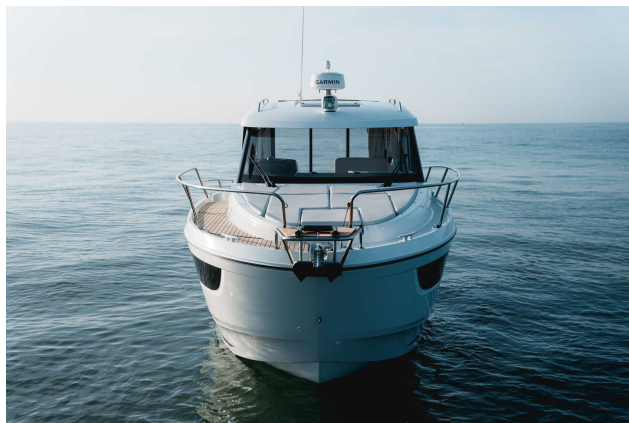


International  
Yacht Broker

Jardines de San Telmo, 16  
07012 Palma de Mallorca  
T: (+34) 971 280 270  
M: (+34) 607 550 337  
palma@azulyachts.com

Lunes a Viernes, de 9.00 a 18.00 h.  
(Agosto, de 9.00 a 15.0  
Sábados cerrado.

[azulyachts.com](http://azulyachts.com)



**azulyachts**

*International  
Yacht Broker*

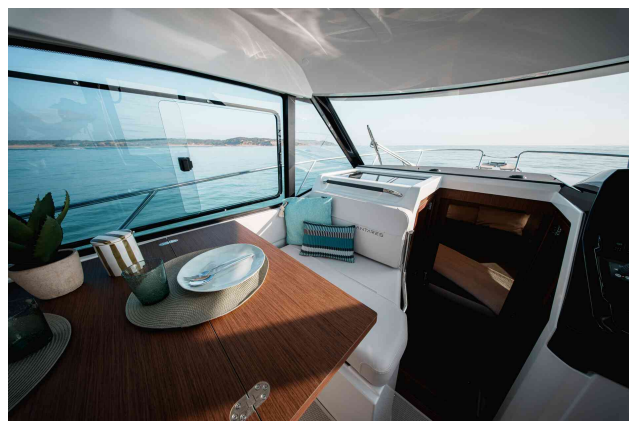
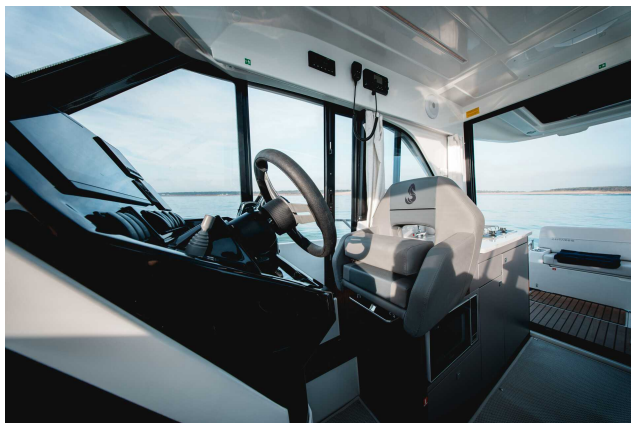
Jardines de San Telmo, 16  
07012 Palma de Mallorca  
T: (+34) 971 280 270  
M: (+34) 607 550 337  
palma@azulyachts.com

Lunes a Viernes, de 9.00 a 18.00 h.  
(Agosto, de 9.00 a 15.0  
Sábados cerrado.

**azulyachts.com**

The Company offers the details of this vessel in good faith but cannot guarantee or warrant the accuracy of this information nor warrant the condition of the vessel. A buyer should instruct his agents, or his surveyors, to investigate such details as the buyer desires validated. This vessel is offered subject to prior sale, price change, or withdrawal without notice.





**azulyachts**

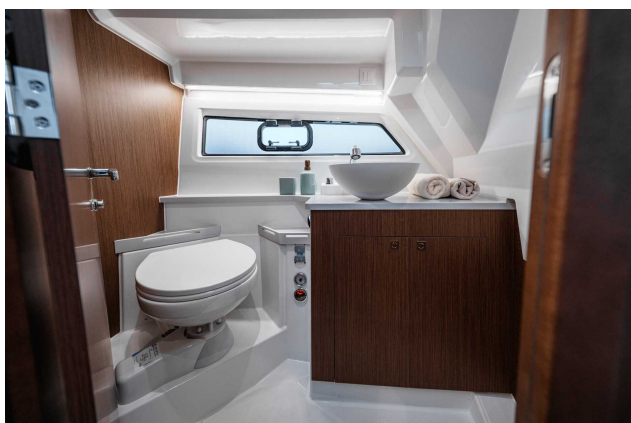
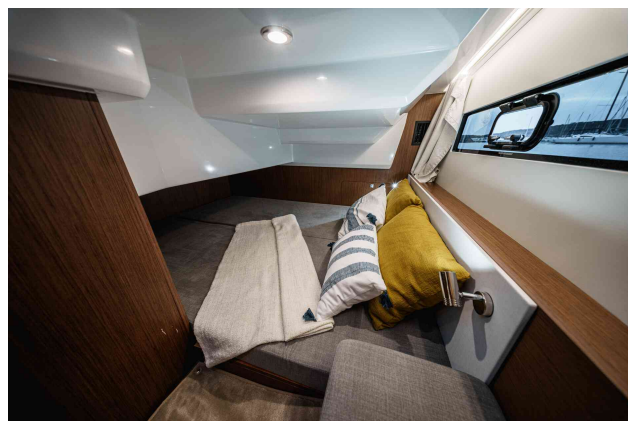
*International  
Yacht Broker*

Jardines de San Telmo, 16  
07012 Palma de Mallorca  
T: (+34) 971 280 270  
M: (+34) 607 550 337  
palma@azulyachts.com

Lunes a Viernes, de 9.00 a 18.00 h.  
(Agosto, de 9.00 a 15.0  
Sábados cerrado.

**azulyachts.com**

The Company offers the details of this vessel in good faith but cannot guarantee or warrant the accuracy of this information nor warrant the condition of the vessel. A buyer should instruct his agents, or his surveyors, to investigate such details as the buyer desires validated. This vessel is offered subject to prior sale, price change, or withdrawal without notice.



**azulyachts**

*International  
Yacht Broker*

Jardines de San Telmo, 16  
07012 Palma de Mallorca  
T: (+34) 971 280 270  
M: (+34) 607 550 337  
palma@azulyachts.com

Lunes a Viernes, de 9.00 a 18.00 h.  
(Agosto, de 9.00 a 15.0  
Sábados cerrado.

**azulyachts.com**

The Company offers the details of this vessel in good faith but cannot guarantee or warrant the accuracy of this information nor warrant the condition of the vessel. A buyer should instruct his agents, or his surveyors, to investigate such details as the buyer desires validated. This vessel is offered subject to prior sale, price change, or withdrawal without notice.