



DEHLER 38

PRICE: 250.000,00 € VAT PAID

FEATURES:

Year:	2019
Homeport:	MALLORCA
LOA (m.):	11.3
Beam (m.):	3,75
Draught (m.):	2,24
Cabins (m.):	3
Material:	FIBERGLASS
Engine type:	VOLVO PENTA D2-40F
Max Engine Power (cv):	40 HP
Fuel tank (l.):	160 LT DIESEL
Fresh water (l.):	300 LT
Hours:	850 - 06-2025

REF: ODOO ID - 2.077



azulyachts

*International
Yacht Broker*

Jardines de San Telmo, 16
07012 Palma de Mallorca
T: (+34) 971 280 270
M: (+34) 607 550 337
palma@azulyachts.com

Lunes a Viernes, de 9.00 a 18.00 h.
(Agosto, de 9.00 a 15.0
Sábados cerrado.

azulyachts.com

The Company offers the details of this vessel in good faith but cannot guarantee or warrant the accuracy of this information nor warrant the condition of the vessel. A buyer should instruct his agents, or his surveyors, to investigate such details as the buyer desires validated. This vessel is offered subject to prior sale, price change, or withdrawal without notice.

OTHER:

The Dehler 38 C is a cruiser-racer sailing yacht designed by Judel/Vrolijk & Co. and built by Dehler Yachts in Germany. This model stands out for combining excellent sailing performance with a comfortable and modern interior, ideal for both family cruising and regattas.

MOORING AVAILABLE

LEASE SUBSTITUTION POSSIBLE

New batteries 2025

Engine service April 2025

Equipped with life raft

Equipped with VHF.

DEHLER 38 according to standard specifications.

EXTRAS

B&G CRUISING NAVIGATION PACK

-2 Instrument consoles (one per steering area)

-VHF 50V B&G mounted on chart table with

H50 wireless transmitter (only with XK5000)

-B&G >Zeus 7" GPS plotter, on starboard console (only with XF2000)

-Antenna for VHF, FM and AIS, incl. Splitter

COMPETITION - UPGRADE

-B&G H5000 autopilot control unit and Precision 9 compass

-H5000 Hydra CPU (only with B&G H5000 instrument)

-2 B&G H5000 multifunction displays, 1 per console incl. transducer
(wind/speed/depth/temp.)

CRUISING PACK

-Teak on bathing platform

-Teak in cockpit

-Bathing platform, manually foldable, with bathing ladder (only with XC1350 or XC1351)

-2 additional retractable cleats (1 per side)

ENTERTAINMENT PACK

- FUSION MS-RA205 FM/AM multimedia radio with Bluetooth, for saloon and cockpit

-2 speakers in the saloon + 2 in the cockpit

-FUSION MS-NRX remote control in the cockpit

OPTIONS

HULL

-Fiberglass hull, gelcoat in FLAG BLUE

-Waterline and decoration line, gelcoat in OFF WHITE

LAYOUT & INTERIOR

-C2 layout: 2 aft cabin with double bed and storage space, port side entrance from the bathroom

WOOD (FURNITURE, FLOORBOARD)

-OAK interior finish

-Flooring - Classic slats

-Wooden floors in bathrooms and shower

UPHOLSTERY, CARPETS & CURTAINS

-Deluxe mattresses for all beds (upgraded)

-Upholstery - Adriatic CREAM leather

DECK & OUTSIDE COMPLEMENT

azulyachts

International
Yacht Broker

Jardines de San Telmo, 16
07012 Palma de Mallorca
T: (+34) 971 280 270
M: (+34) 607 550 337
palma@azulyachts.com

Lunes a Viernes, de 9.00 a 18.00 h.
(Agosto, de 9.00 a 15.0
Sábados cerrado.

azulyachts.com

-Electric anchor winch, remote control with chain counter (only with XH1001)

-DELTA anchor (10 kg) galvanised with 30 m of galvanised chain (8 mm)

-Battery set, capacity: 1x90Ah + 2x160Ah AGM (12v)

-Headrests, saloon

-Set of blinds and mosquito nets for hatches

-Blinds for hull windows

-Blinds for deck hatches

-Wind indicator (Windex)

-Cockpit pole

-6 fenders

-4 mooring lines

-Dehler maintenance kit

COMPETITION PACK

-Decoration line - Competition

-Competition rudder

-2 composite steering wheels with black Y-shaped spokes

-2 manual halyard winches - LEWMAN 45 Race Plus

-2 secondary manual winches - LEWMAN 50 Race Plus

-2 manual mainsail winches - LEWMAN 45 Race Plus

-Competition genoa cars with ball bearings, adjustable from the cockpit

UPGRADE ELECTRIC WINCH

- Electric port halyard winch

-Removable teak cockpit table with folding wings, stainless steel structure.

RIG & SAILS

-Mainsail lazy bag with lazy jacks in LIGHT GREY

-High Performance Competition sails (Mainsail and jib)

ELVSTRÖM HPM membrane, full batten, UV protection

-ELVSTRÖM Gennaker in GREY

-Sock for Gennaker

-Gennaker/Free Ride package including halyard, sheets, 2 pulleys and shackles

NAVIGATION & INSTRUMENTS

-Class B AIS transponder

PROPULSION UPGRADE

-Diesel engine, VOLVO PENTA D2-40F, saildrive, 3-blade folding propeller

EQUIPMENT

-Inverter/charger 12/1600W - 60A, incl. AC panel (only with XH1001)

ACCESSORIES

-Cockpit table covers in LIGHT GREY

-Wheel covers in LIGHT GREY

Antifouling

-3 B&G 20/20 displays on mast with B&G bracket

-Aluminium deck inserts (Spi sheet return - Monte Carlo base)

-Pulleys and paddies for Spi sheet return

-Change of pedestals and position of compass on bench backs

-EXTRAS ADDED 9-11-18

-1.3 ID 1023 Additional stopper for Gennaker



International
Yacht Broker

Jardines de San Telmo, 16
07012 Palma de Mallorca
T: (+34) 971 280 270
M: (+34) 607 550 337
palma@azulyachts.com

Lunes a Viernes, de 9.00 a 18.00 h.
(Agosto, de 9.00 a 15.0
Sábados cerrado.

azulyachts.com

-1.4 ID 1030 Lewmar 45 race upgrade for electric winch

EXTRAS INCLUDED

SOLBIAN 240W SOLAR PANEL ON BIMINI

VICTRON SOLAR REGULATOR

VICTRON BATTERY CONTROLLER

DECK SPOTLIGHT

HANDRAILS ON STEERING WHEEL

REMOTE CONTROL AUTOMATIC PILOT

FUEL PRE-FILTER

ROLL-UP AWNING UP TO MAST

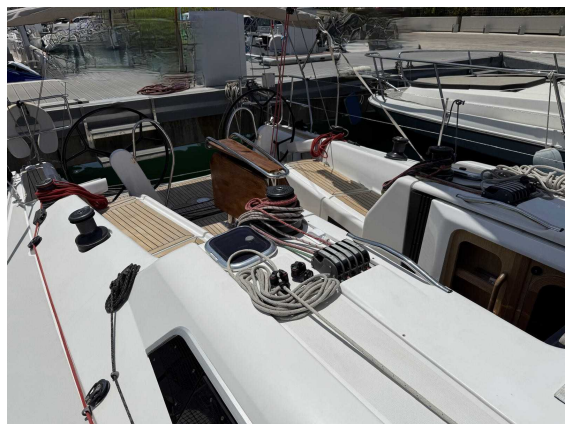
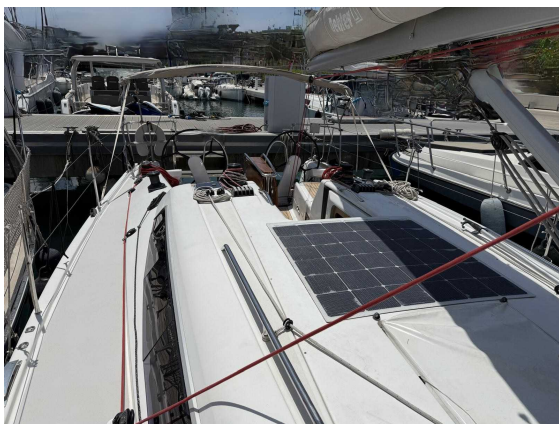
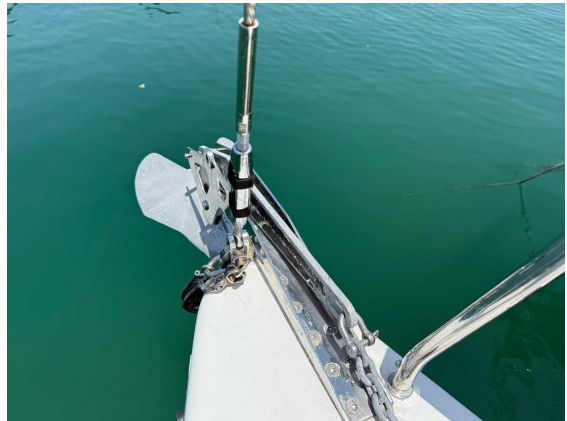


*International
Yacht Broker*

Jardines de San Telmo, 16
07012 Palma de Mallorca
T: (+34) 971 280 270
M: (+34) 607 550 337
palma@azulyachts.com

Lunes a Viernes, de 9.00 a 18.00 h.
(Agosto, de 9.00 a 15.0
Sábados cerrado.

azulyachts.com



azulyachts

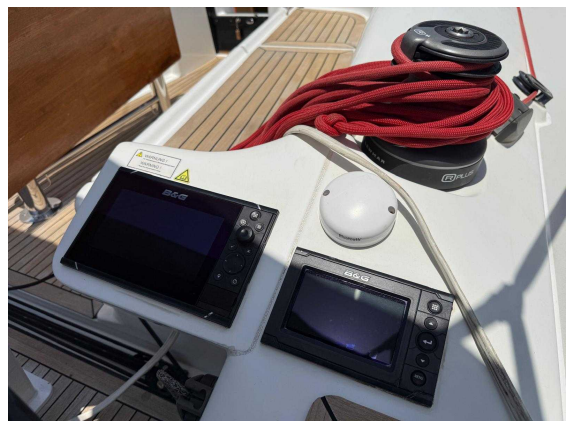
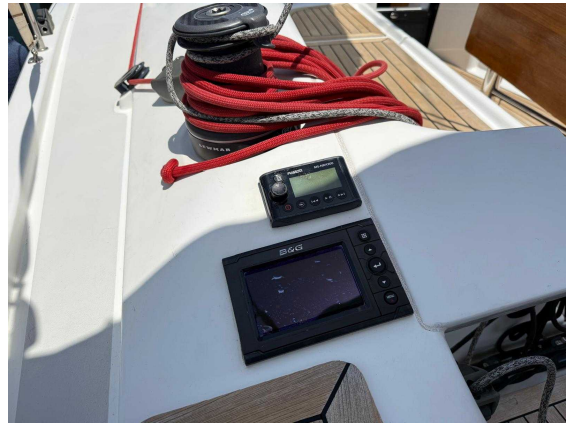
*International
Yacht Broker*

Jardines de San Telmo, 16
07012 Palma de Mallorca
T: (+34) 971 280 270
M: (+34) 607 550 337
palma@azulyachts.com

Lunes a Viernes, de 9.00 a 18.00 h.
(Agosto, de 9.00 a 15.0
Sábados cerrado.

azulyachts.com

The Company offers the details of this vessel in good faith but cannot guarantee or warrant the accuracy of this information nor warrant the condition of the vessel. A buyer should instruct his agents, or his surveyors, to investigate such details as the buyer desires validated. This vessel is offered subject to prior sale, price change, or withdrawal without notice.



azulyachts

International
Yacht Broker

Jardines de San Telmo, 16
07012 Palma de Mallorca
T: (+34) 971 280 270
M: (+34) 607 550 337
palma@azulyachts.com

Lunes a Viernes, de 9.00 a 18.00 h.
(Agosto, de 9.00 a 15.0
Sábados cerrado.

azulyachts.com

The Company offers the details of this vessel in good faith but cannot guarantee or warrant the accuracy of this information nor warrant the condition of the vessel. A buyer should instruct his agents, or his surveyors, to investigate such details as the buyer desires validated. This vessel is offered subject to prior sale, price change, or withdrawal without notice.



azulyachts

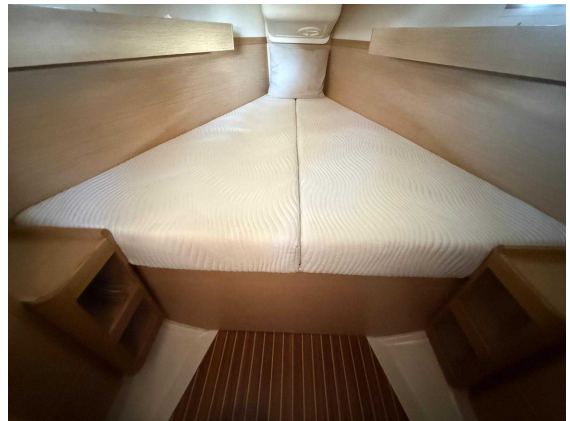
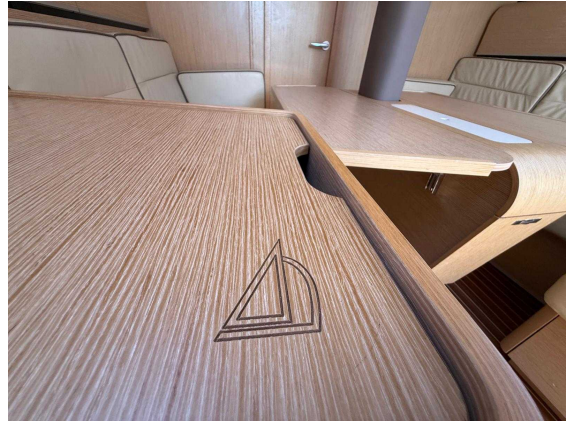
*International
Yacht Broker*

Jardines de San Telmo, 16
07012 Palma de Mallorca
T: (+34) 971 280 270
M: (+34) 607 550 337
palma@azulyachts.com

Lunes a Viernes, de 9.00 a 18.00 h.
(Agosto, de 9.00 a 15.0
Sábados cerrado.

azulyachts.com

The Company offers the details of this vessel in good faith but cannot guarantee or warrant the accuracy of this information nor warrant the condition of the vessel. A buyer should instruct his agents, or his surveyors, to investigate such details as the buyer desires validated. This vessel is offered subject to prior sale, price change, or withdrawal without notice.



azulyachts

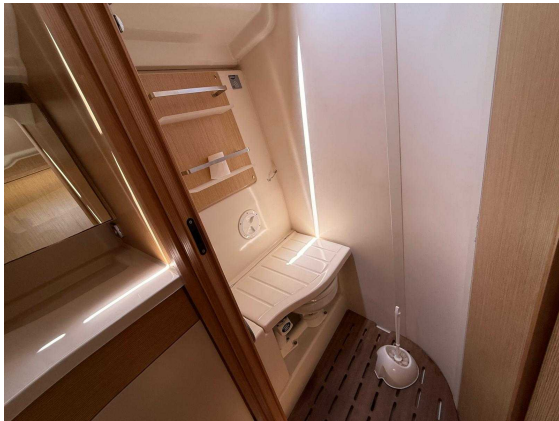
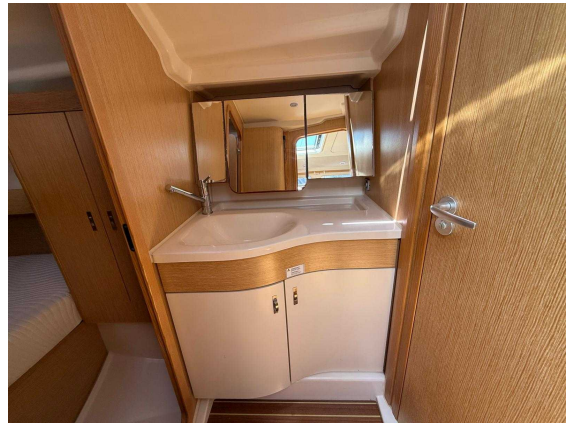
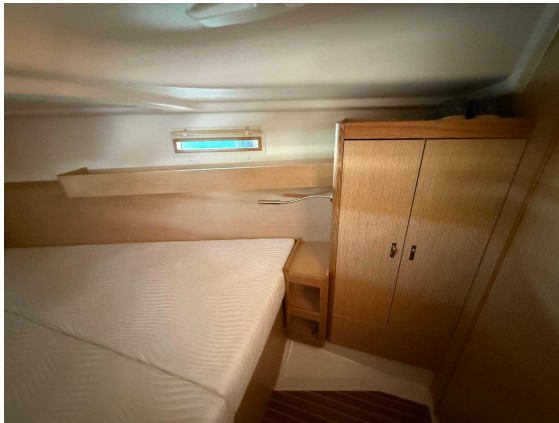
*International
Yacht Broker*

Jardines de San Telmo, 16
07012 Palma de Mallorca
T: (+34) 971 280 270
M: (+34) 607 550 337
palma@azulyachts.com

Lunes a Viernes, de 9.00 a 18.00 h.
(Agosto, de 9.00 a 15.0
Sábados cerrado.

azulyachts.com

The Company offers the details of this vessel in good faith but cannot guarantee or warrant the accuracy of this information nor warrant the condition of the vessel. A buyer should instruct his agents, or his surveyors, to investigate such details as the buyer desires validated. This vessel is offered subject to prior sale, price change, or withdrawal without notice.



azulyachts

*International
Yacht Broker*

Jardines de San Telmo, 16
07012 Palma de Mallorca
T: (+34) 971 280 270
M: (+34) 607 550 337
palma@azulyachts.com

Lunes a Viernes, de 9.00 a 18.00 h.
(Agosto, de 9.00 a 15.0
Sábados cerrado.

azulyachts.com

The Company offers the details of this vessel in good faith but cannot guarantee or warrant the accuracy of this information nor warrant the condition of the vessel. A buyer should instruct his agents, or his surveyors, to investigate such details as the buyer desires validated. This vessel is offered subject to prior sale, price change, or withdrawal without notice.