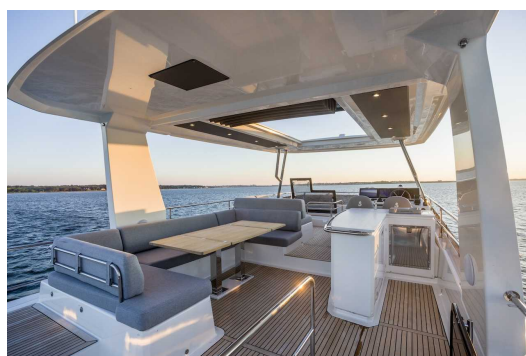
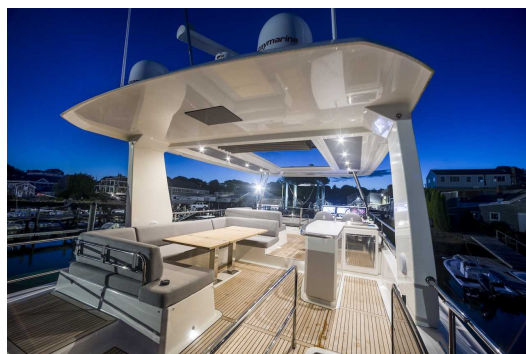




BENETEAU GRAND TRAWLER 63

FEATURES:

Naval architect:	MICAD
LOA (m.):	18,95 Mt.
Beam (m.):	5,45 Mt.
Displacement (kg.):	28 500 kg
Fuel tank (L.):	2 x 1 935 L
Fresh water (l.):	840 L
Max Engine Power (cv):	MAN I6-730 2X730HP (2X537 KW)
Propulsion:	MAN I6-730 2X730HP (2X537 KW) DIESEL JOYSTICK
CE Certification:	B16



azulyachts

*International
Yacht Broker*

Jardines de San Telmo, 16
07012 Palma de Mallorca
T: (+34) 971 280 270
M: (+34) 607 550 337
palma@azulyachts.com

Lunes a Viernes, de 9.00 a 18.00 h.
(Agosto, de 9.00 a 15.0
Sábados cerrado.

azulyachts.com

The Company offers the details of this vessel in good faith but cannot guarantee or warrant the accuracy of this information nor warrant the condition of the vessel. A buyer should instruct his agents, or his surveyors, to investigate such details as the buyer desires validated. This vessel is offered subject to prior sale, price change, or withdrawal without notice.

OTHER:

A NEW BENCHMARK FOR TRAVELLING IN STYLE

The BENETEAU Grand Trawler 63 is not just an evolution, it is a new vision of luxury offshore cruising. Designed for those seeking serenity, precision and performance, this yacht sets a new standard in elegant cruising. Born from the legacy of the acclaimed Grand Trawler 62, the Grand Trawler 63 goes further, literally and figuratively, redesigning every detail to offer a more intuitive, quiet and luxurious cruising experience.

The Grand Trawler 63 invites you to redefine your idea of luxury.

For those who believe that time is the ultimate luxury, this is your yacht.

A REFINED VISION, A REINVENTED LEGACY

From its powerful displacement hull to the elegant lines that give it a timeless presence on the water, the Grand Trawler 63 balances elegance and functionality. Developed in collaboration with MICAD Naval Architects, its hull offers remarkable fuel efficiency, with a range of up to 900 nautical miles at 9 knots with a 10% fuel reserve. Optional features such as the modular grey flybridge and Texan-style barbecue ensure that every moment spent outdoors is memorable, whether at anchor or underway.

At the heart of the Grand Trawler 63 is the quest for authentic silence. With Slepner fin stabilisers and the optional Silent Boat Pack, ambient noise is drastically reduced. Advanced soundproofing in the engine room and crew areas ensures a quiet and undisturbed experience.

A YACHT TO LIVE IN

Step aboard and discover interiors designed for enjoying life at sea to the fullest. Available in three or four cabin layouts, all offer maximum comfort with refined bathrooms, high-end fittings and elegant lacquered finishes. Smart details such as cabinet door closures, increased storage space and a convertible coffee table with removable cushion create a space that is as versatile as it is luxurious. Everything has been designed to make you feel at home, or even better.

BENETEAU raises the bar in terms of value by including equipment that is usually optional. From Slepner stabilisers to the Luxe Pack and AGM service batteries, the Grand Trawler 63 is generously equipped to cover long distances from the moment it is delivered.

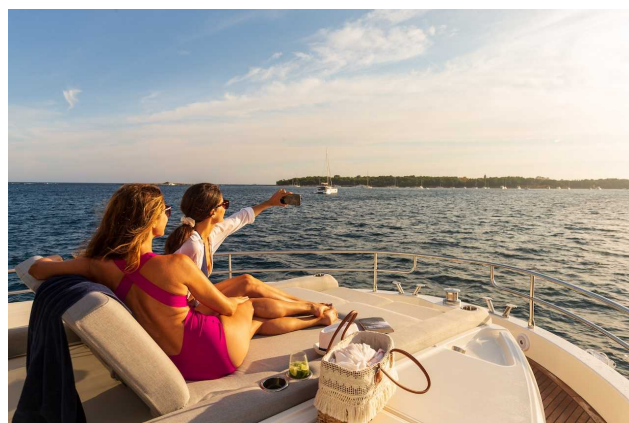


International
Yacht Broker

Jardines de San Telmo, 16
07012 Palma de Mallorca
T: (+34) 971 280 270
M: (+34) 607 550 337
palma@azulyachts.com

Lunes a Viernes, de 9.00 a 18.00 h.
(Agosto, de 9.00 a 15.0
Sábados cerrado.

azulyachts.com



azulyachts

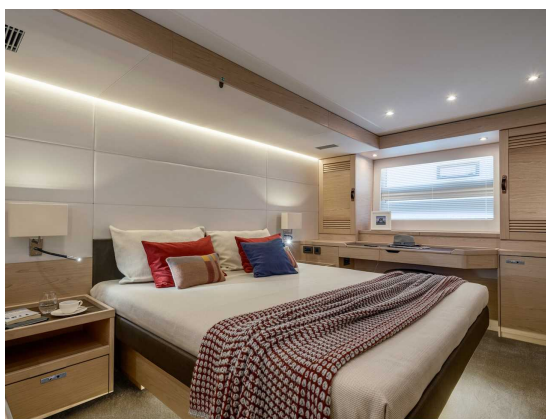
*International
Yacht Broker*

Jardines de San Telmo, 16
07012 Palma de Mallorca
T: (+34) 971 280 270
M: (+34) 607 550 337
palma@azulyachts.com

Lunes a Viernes, de 9.00 a 18.00 h.
(Agosto, de 9.00 a 15.0
Sábados cerrado.

azulyachts.com

The Company offers the details of this vessel in good faith but cannot guarantee or warrant the accuracy of this information nor warrant the condition of the vessel. A buyer should instruct his agents, or his surveyors, to investigate such details as the buyer desires validated. This vessel is offered subject to prior sale, price change, or withdrawal without notice.



azulyachts

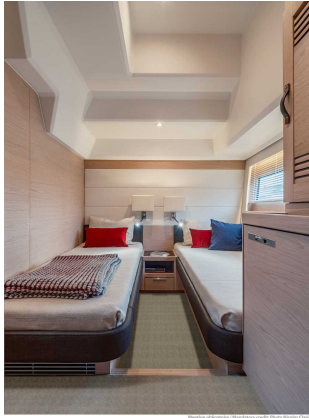
**International
Yacht Broker**

Jardines de San Telmo, 16
07012 Palma de Mallorca
T: (+34) 971 280 270
M: (+34) 607 550 337
palma@azulyachts.com

Lunes a Viernes, de 9.00 a 18.00 h.
(Agosto, de 9.00 a 15.0
Sábados cerrado.

azulyachts.com

The Company offers the details of this vessel in good faith but cannot guarantee or warrant the accuracy of this information nor warrant the condition of the vessel. A buyer should instruct his agents, or his surveyors, to investigate such details as the buyer desires validated. This vessel is offered subject to prior sale, price change, or withdrawal without notice.



Reserva obligatoria - Reservación obligatoria - Photo: Yacht Club

azulyachts

**International
Yacht Broker**

Jardines de San Telmo, 16
07012 Palma de Mallorca
T: (+34) 971 280 270
M: (+34) 607 550 337
palma@azulyachts.com

Lunes a Viernes, de 9.00 a 18.00 h.
(Agosto, de 9.00 a 15.0
Sábados cerrado.

azulyachts.com

The Company offers the details of this vessel in good faith but cannot guarantee or warrant the accuracy of this information nor warrant the condition of the vessel. A buyer should instruct his agents, or his surveyors, to investigate such details as the buyer desires validated. This vessel is offered subject to prior sale, price change, or withdrawal without notice.