

# NEW BOAT



## WELLCRAFT 28 T-TOP

REF: ODOO ID - 2.123

**PRICE: 147.189,00 € VAT NOT INCLUSIVE**

### FEATURES:

Year:	2026
Homeport:	MALLORCA
LOA (m.):	7.95
Beam (m.):	2,90
Draught (m.):	0,63
Cabins (m.):	
Material:	FIBERGLASS
Engine type:	MERCURY 1x300HP XXL V8 VERADO DTS WHITE
Max Engine Power (cv):	300 HP
Fuel tank (l.):	340 LT. GASOLINA
Fresh water (l.):	80 LT



**azulyachts**

International  
Yacht Broker

Jardines de San Telmo, 16  
07012 Palma de Mallorca  
T: (+34) 971 280 270  
M: (+34) 607 550 337  
palma@azulyachts.com

Lunes a Viernes, de 9.00 a 18.00 h.  
(Agosto, de 9.00 a 15.0  
Sábados cerrado.

**azulyachts.com**

The Company offers the details of this vessel in good faith but cannot guarantee or warrant the accuracy of this information nor warrant the condition of the vessel. A buyer should instruct his agents, or his surveyors, to investigate such details as the buyer desires validated. This vessel is offered subject to prior sale, price change, or withdrawal without notice.

---

Hours:	0
--------	---

---



*International  
Yacht Broker*

Jardines de San Telmo, 16  
07012 Palma de Mallorca  
T: (+34) 971 280 270  
M: (+34) 607 550 337  
palma@azulyachts.com

Lunes a Viernes, de 9.00 a 18.00 h.  
(Agosto, de 9.00 a 15.0  
Sábados cerrado.

**azulyachts.com**

The Company offers the details of this vessel in good faith but cannot guarantee or warrant the accuracy of this information nor warrant the condition of the vessel. A buyer should instruct his agents, or his surveyors, to investigate such details as the buyer desires validated. This vessel is offered subject to prior sale, price change, or withdrawal without notice.

## OTHER:

The Wellcraft 28 T-Top is a 28-foot open boat with a centre console, designed for fast cruising, inshore fishing and family outings in rough seas. There are different versions (Sport, High, Explorer) which have the same hull but differ in terms of cockpit protection, layout and equipment.

The T-Top Sport version focuses on a clear cockpit area for fishing and passengers, while the T-Top High version enhances protection with a higher windscreen and wraparound T-top. Under the console there is usually a small enclosed storage space that can be used as a toilet or storage space, depending on the version, which is advantageous for daytime family use.

MERCURY 1x300HP XXL V8 VERADO DTS WHITE

### T TOP - HIGH WINDSHIELD

- Aft cockpit flood light
- 2x Bow cockpit flood lights
- Anchor light
- Windshield wiper with washdown

### "LOUNGE" VERSION - UPHOLSTERY ARCTIC

- L bench in aft cockpit
- Storage under the seating
- Composite table in aft cockpit - removable
- Trash bin in wetbar

### "WELLCRAFT" TRIM LEVEL

- Mooring kit (4x mooring lines, 6x fenders, 6x Wellcraft branded fender socks)
- Courtesy led light
- Shore power with socket in cabin, 230V
- Battery bank, 95Ah, 12V (just pre-rig, dealer supply and installation)
- Wireless charger & holder in dashboard
- Cooler in bow cockpit

### ELECTRONIC PACK

- Garmin GPSMAP 1523 Ultra-wide display (no chart included)

- Fresh water in cabin with foldable tap, cold water
- Fresh water in wetbar with foldable tap, cold water

### ANCHOR PACK

- Anchor bow roller, stainless steel
- Anchor windlass, electric include remote control
- Anchor 7,5kg/16.5lbs, "Claw" type, stainless steel incl 10m/32ft chain 25m/80ft rope

### BOW CABIN PACK (Requires FRESH WATER PACK )

- Comfort mattresses - Upholstery Desert
- Sink cover
- Electric toilet incl black water tank, 54l/14gal (Replaces Porta potti)
- Smart storage system
- USB-A/C combo sockets
- Mirror
- Marine mat bow cabin flooring

### OYSTER WHITE, GELCOAT

### AFT COCKPIT SUN AWNING WITH 2x CARBON POLES AND STORAGE BAG (T-TOP VERSION)

### BOW COCKPIT TABLE WITH IN-FILL CUSHION - ARTIC

### WATER SKI PYLON, REMOVABLE

### HARBOUR COVER SET - LOUNGE VERSION

- Bow cockpit seating area
- Aft cockpit seating area
- Pilot & co-pilot seat
- Steering console

### BOW THRUSTER

### LENCO TRIM TABS, ELECTRIC

### DRAWER FRIDGE IN WETBAR, 51l/13.4gal

### Transporte and commissioning in Palma de Mallorca



International  
Yacht Broker

Jardines de San Telmo, 16  
07012 Palma de Mallorca  
T: (+34) 971 280 270  
M: (+34) 607 550 337  
palma@azulyachts.com

Lunes a Viernes, de 9.00 a 18.00 h.  
(Agosto, de 9.00 a 15.0  
Sábados cerrado.

[azulyachts.com](http://azulyachts.com)

- Garmin GT15M-IH transducer

#### AUDIO PACK

- Fusion BB100 head unit incl. remote control
- 4x JL Audio M3 6.5" speakers

#### FRESH WATER PACK

- Fresh water tank, 80l/21gal
- Shower on transom, cold water

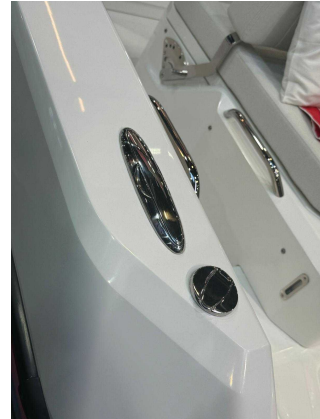


*International  
Yacht Broker*

Jardines de San Telmo, 16  
07012 Palma de Mallorca  
T: (+34) 971 280 270  
M: (+34) 607 550 337  
palma@azulyachts.com

Lunes a Viernes, de 9.00 a 18.00 h.  
(Agosto, de 9.00 a 15.0  
Sábados cerrado.

[azulyachts.com](http://azulyachts.com)



**azulyachts**

*International  
Yacht Broker*

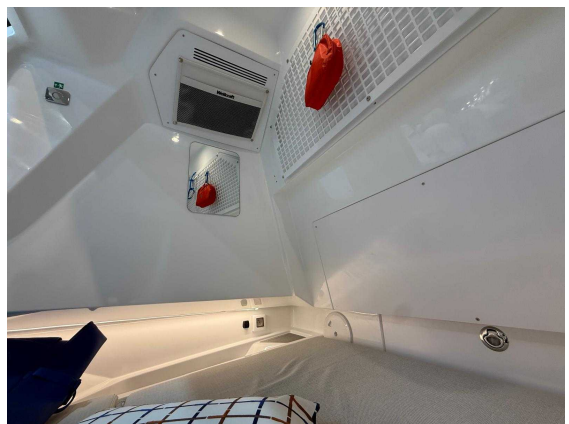
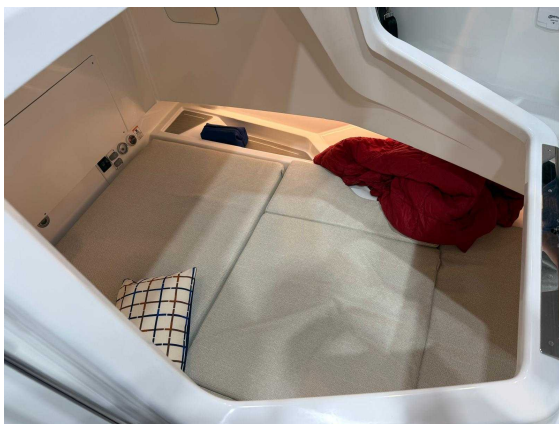
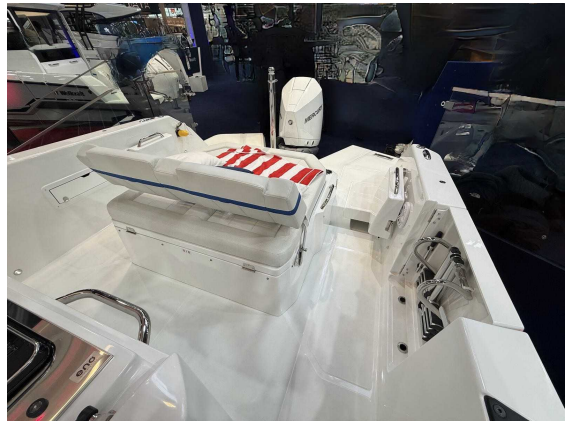
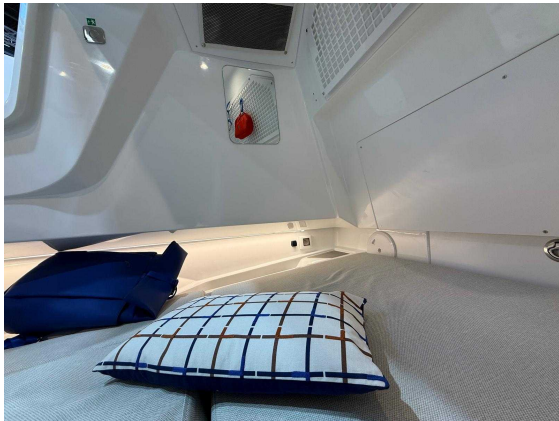
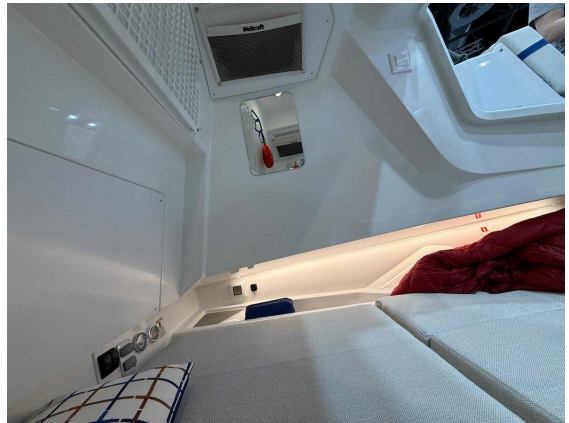
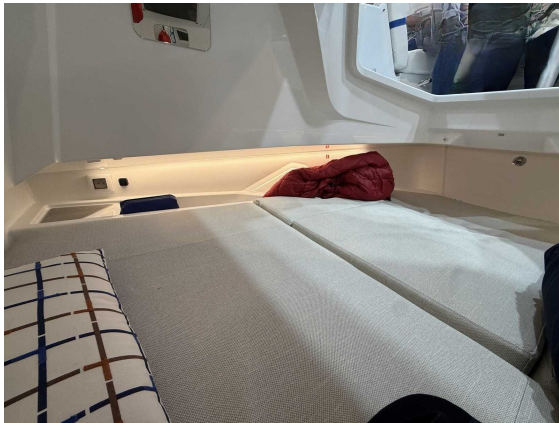
Jardines de San Telmo, 16  
07012 Palma de Mallorca  
T: (+34) 971 280 270  
M: (+34) 607 550 337  
palma@azulyachts.com

Lunes a Viernes, de 9.00 a 18.00 h.  
(Agosto, de 9.00 a 15.0  
Sábados cerrado.

**azulyachts.com**

The Company offers the details of this vessel in good faith but cannot guarantee or warrant the accuracy of this information nor warrant the condition of the vessel. A buyer should instruct his agents, or his surveyors, to investigate such details as the buyer desires validated. This vessel is offered subject to prior sale, price change, or withdrawal without notice.





**azulyachts**

**International  
Yacht Broker**

Jardines de San Telmo, 16  
07012 Palma de Mallorca  
T: (+34) 971 280 270  
M: (+34) 607 550 337  
palma@azulyachts.com

Lunes a Viernes, de 9.00 a 18.00 h.  
(Agosto, de 9.00 a 15.0  
Sábados cerrado.

**azulyachts.com**

The Company offers the details of this vessel in good faith but cannot guarantee or warrant the accuracy of this information nor warrant the condition of the vessel. A buyer should instruct his agents, or his surveyors, to investigate such details as the buyer desires validated. This vessel is offered subject to prior sale, price change, or withdrawal without notice.