



# BENETEAU ANTARES 8 OB V2

## CECHY:

Naval architect:	BENETEAU POWERBOATS - DISEÑO INTERIOR : SARRAZIN DESIGN
LOA (m.):	8.06 m
Szerokość (m.):	2.80 m
Displacement (kg.):	2545 Kg
Zbiornik paliwa (L.):	340 L
Woda słodka (l.):	100 L
Maks. moc silnika:	250 CV
Propulsion:	
CE Certification:	C9/D9



**azulyachts**

International  
Yacht Broker

Jardines de San Telmo, 16  
07012 Palma de Mallorca  
T: (+34) 971 280 270  
M: (+34) 607 550 337  
palma@azulyachts.com

Lunes a Viernes, de 9.00 a 18.00 h.  
(Agosto, de 9.00 a 15.0  
Sábados cerrado.

**azulyachts.com**

The Company offers the details of this vessel in good faith but cannot guarantee or warrant the accuracy of this information nor warrant the condition of the vessel. A buyer should instruct his agents, or his surveyors, to investigate such details as the buyer desires validated. This vessel is offered subject to prior sale, price change, or withdrawal without notice.

## INNY:

Antares 8 Fishing może pochwalić się eleganckim, sportowym designem i oferuje nowe funkcje, które będą popularne wśród każdego, kto kocha morskie aktywności, zwłaszcza wędkarstwo; z charakterystycznym stylem i elegancją tej kultowej linii i prawdziwym komfortem.

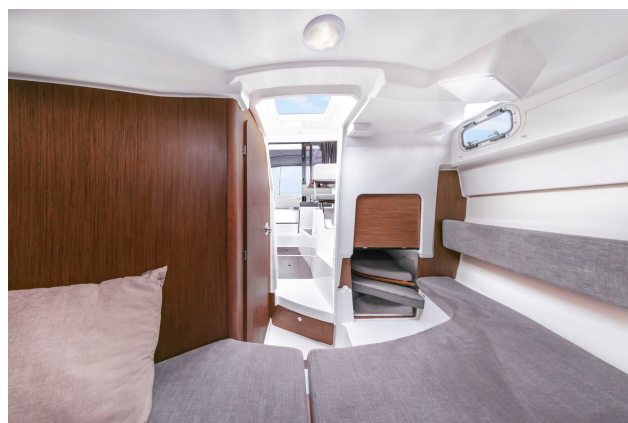
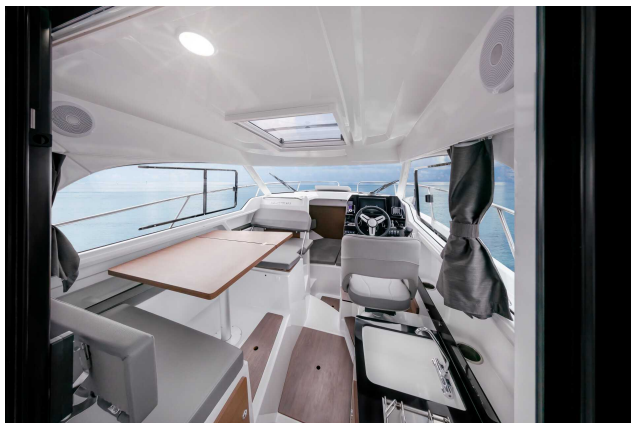


*International  
Yacht Broker*

Jardines de San Telmo, 16  
07012 Palma de Mallorca  
T: (+34) 971 280 270  
M: (+34) 607 550 337  
palma@azulyachts.com

Lunes a Viernes, de 9.00 a 18.00 h.  
(Agosto, de 9.00 a 15.0  
Sábados cerrado.

[azulyachts.com](http://azulyachts.com)



**azulyachts**

*International  
Yacht Broker*

Jardines de San Telmo, 16  
07012 Palma de Mallorca  
T: (+34) 971 280 270  
M: (+34) 607 550 337  
palma@azulyachts.com

Lunes a Viernes, de 9.00 a 18.00 h.  
(Agosto, de 9.00 a 15.0  
Sábados cerrado.

**azulyachts.com**

The Company offers the details of this vessel in good faith but cannot guarantee or warrant the accuracy of this information nor warrant the condition of the vessel. A buyer should instruct his agents, or his surveyors, to investigate such details as the buyer desires validated. This vessel is offered subject to prior sale, price change, or withdrawal without notice.





**azulyachts**

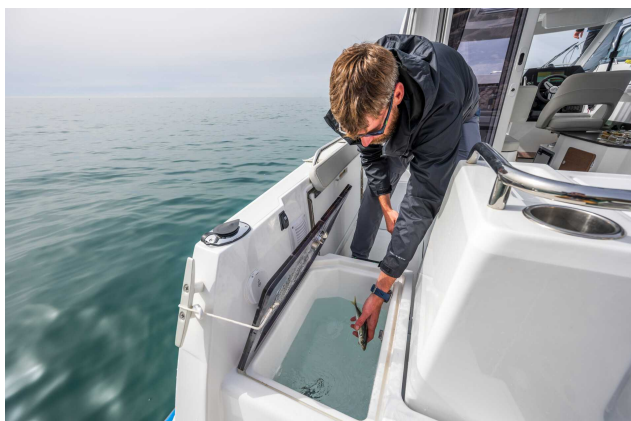
*International  
Yacht Broker*

Jardines de San Telmo, 16  
07012 Palma de Mallorca  
T: (+34) 971 280 270  
M: (+34) 607 550 337  
palma@azulyachts.com

Lunes a Viernes, de 9.00 a 18.00 h.  
(Agosto, de 9.00 a 15.0  
Sábados cerrado.

**azulyachts.com**

The Company offers the details of this vessel in good faith but cannot guarantee or warrant the accuracy of this information nor warrant the condition of the vessel. A buyer should instruct his agents, or his surveyors, to investigate such details as the buyer desires validated. This vessel is offered subject to prior sale, price change, or withdrawal without notice.



**azulyachts**

*International  
Yacht Broker*

Jardines de San Telmo, 16  
07012 Palma de Mallorca  
T: (+34) 971 280 270  
M: (+34) 607 550 337  
palma@azulyachts.com

Lunes a Viernes, de 9.00 a 18.00 h.  
(Agosto, de 9.00 a 15.0  
Sábados cerrado.

**azulyachts.com**

The Company offers the details of this vessel in good faith but cannot guarantee or warrant the accuracy of this information nor warrant the condition of the vessel. A buyer should instruct his agents, or his surveyors, to investigate such details as the buyer desires validated. This vessel is offered subject to prior sale, price change, or withdrawal without notice.